

# ***TOURIST ACCOMMODATION*** AUSTRALIA

EMBARGO: 11.30AM (CANBERRA TIME) WED 30 MAR 2005

## **C O N T E N T S**

	<i>page</i>
Notes .....	2
Summary of findings .....	3
List of tables .....	7

## **ADDITIONAL INFORMATION**

Explanatory notes .....	41
Glossary .....	45

## **I N Q U I R I E S**

For further information about these and related statistics, contact the National Information and Referral Service on 1300 135 070.

# NOTES

## FORTHCOMING ISSUES

ISSUE (Quarter)	RELEASE DATE
March 2005	30 June 2005
June 2005	30 September 2005

.....

## ABOUT THIS PUBLICATION

This publication presents results from the quarterly Survey of Tourist Accommodation (STA). For 2004 the STA includes the following categories of establishments which provide predominantly short-term non-residential accommodation to the general public:

- hotels and resorts with facilities and 15 or more rooms
- motels, private hotels and guest houses with facilities and 15 or more rooms
- serviced apartments with 15 or more units.

## DATA QUALITY INDICATORS

National imputation rates will now be reported in the Explanatory Notes of this publication and imputation rates for each state and territory will be reported in the data cubes, *Tourist Accommodation, Small Area Data* (cat. no. 8635.1.55.001 - 8635.8.55.001), available at the ABS web site <[www.abs.gov.au](http://www.abs.gov.au)>.

## REVISIONS TO DATA CUBES

The column labels and units of quantity of some data items included in previously released data cubes were inconsistent. This has been corrected and the affected data cubes have been re-released on the ABS web site <[www.abs.gov.au](http://www.abs.gov.au)>. Further details about these revisions are included in the notes accompanying the re-released data cubes.

The following data cube has been re-released for the December quarter 2003:

*Tourist Accommodation, Small Area Data, New South Wales* (cat.no.8635.1.55.001)

The following data cubes have been re-released for the March quarter 2004:

*Tourist Accommodation, Small Area Data, New South Wales* (cat.no.8635.1.55.001)

*Tourist Accommodation, Small Area Data, Victoria* (cat.no.8635.2.55.001)

*Tourist Accommodation, Small Area Data, Queensland* (cat.no.8635.3.55.001)

*Tourist Accommodation, Small Area Data, South Australia* (cat.no.8635.4.55.001)

*Tourist Accommodation, Small Area Data, Western Australia*

(cat.no.8635.5.55.001)

*Tourist Accommodation, Small Area Data, Tasmania* (cat.no.8635.6.55.001)

## CHANGES IN FUTURE ISSUES

An expansion to the scope of the STA will occur from March quarter 2005. This will take the form of a reduction in the size cut-off for hotels, motels and guest houses and serviced apartments from 15 rooms to 5 rooms. The scope will also be expanded to include caravan parks with 40 or more powered sites, visitor hostels with 25 or more bed spaces, and holiday flats and units with 15 or more units.

First results from the expanded scope will be included in the June quarter 2005 issue. This issue will present results from the March and June quarters 2005, after which results will be published quarterly. Note that the March quarter 2005 issue will remain unchanged and will present data within the current scope only.

Dennis Trewin  
Australian Statistician

## SUMMARY OF FINDINGS

### SEASONALLY ADJUSTED AND TREND

### SEASONALLY ADJUSTED AND TREND KEY FIGURES, Licensed hotels, motels and guest houses and serviced apartments—Australia

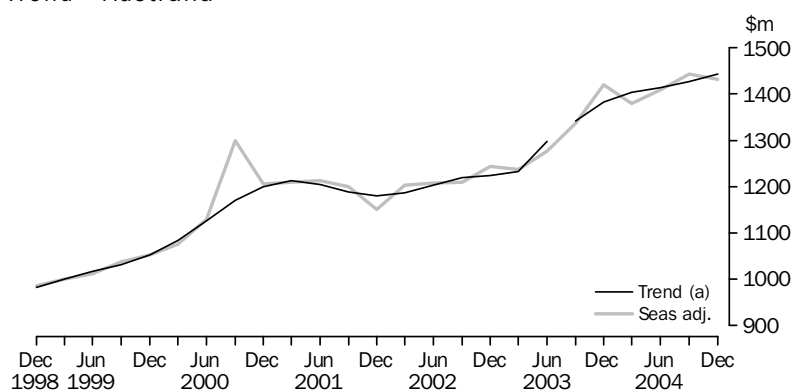
	Dec Qtr 2003	Sep Qtr 2004	Dec Qtr 2004
<b>Seasonally Adjusted</b>			
Room occupancy rate (%)	62.0	62.5	62.2
Takings from accommodation ('000)	1 420 570	1 443 533	1 431 481
<b>Trend</b>			
Room occupancy rate (%)	61.3	62.2	62.5
Takings from accommodation ('000)	1 382 056	1 426 740	1 443 286

#### Accommodation takings

The trend estimate of the total accommodation takings for licensed hotels with facilities, motels and guest houses and serviced apartments combined continued to increase. In December quarter 2004, it increased by 4.4% to \$1,443.3 million compared with December quarter 2003.

The seasonally adjusted estimate of the total accommodation takings rose by 0.8% to \$1,431.5 million from December quarter 2003 to December quarter 2004.

#### ACCOMMODATION TAKINGS (a), Seasonally adjusted and Trend—Australia



(a) Break in time series between the March and June quarters 2003. See Explanatory Notes.

#### Room occupancy rate

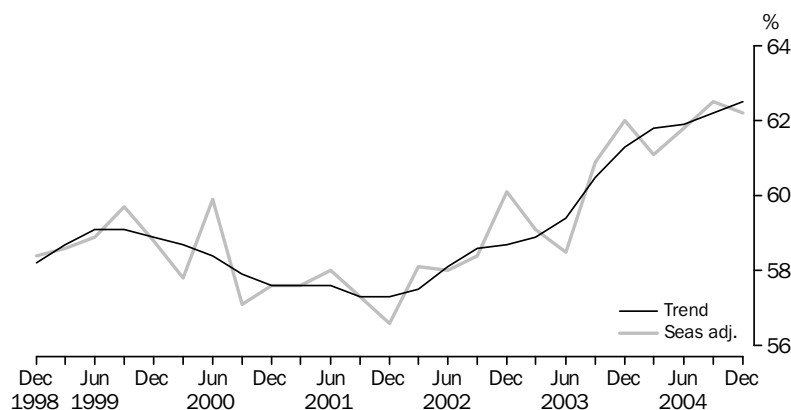
The trend estimate of the room occupancy rate for licensed hotels with facilities, motels and guest houses and serviced apartments combined rose by 1.2 percentage points from 61.3% in December quarter 2003 to 62.5% in December quarter 2004. This rate has been increasing since the March quarter 2002.

The seasonally adjusted estimate of the room occupancy rate increased by 0.2 percentage points to 62.2% from December quarter 2003 to December quarter 2004.

## SUMMARY OF FINDINGS *continued*

Room occupancy rate  
*continued*

ROOM OCCUPANCY RATE(a), Seasonally adjusted and  
Trend—Australia



(a) Room occupancy rates are not subject to a break in series.

ORIGINAL

ORIGINAL KEY FIGURES, Australia

	Dec Qtr 2003	Sep Qtr 2004	Dec Qtr 2004
<b>Licensed hotels with facilities</b>			
Rooms ( <i>no.</i> )	78 720	78 777	78 574
Room nights occupied ('000)	4 996.5	5 021.7	5 035.1
Room occupancy rate (%)	69.4	69.3	70.0
Takings from accommodation (\$'000)	759 603	720 863	749 901
Average takings per room night occupied (\$)	152.0	143.5	148.9
<b>Motels and guest houses</b>			
Rooms ( <i>no.</i> )	85 390	84 452	85 185
Room nights occupied ('000)	4 380.2	4 397.4	4 330.7
Room occupancy rate (%)	55.9	56.7	55.6
Takings from accommodation (\$'000)	407 394	418 253	412 426
Average takings per room night occupied (\$)	93.0	95.1	95.2
<b>Serviced apartments</b>			
Rooms ( <i>no.</i> )	40 351	41 601	41 736
Room nights occupied ('000)	2 524.7	2 668.8	2 628.6
Room occupancy rate (%)	68.1	69.9	68.6
Takings from accommodation (\$'000)	332 348	346 601	350 702
Average takings per room night occupied (\$)	131.6	129.9	133.4
<b>Total</b>			
Rooms ( <i>no.</i> )	204 461	204 830	205 495
Room nights occupied ('000)	11 901.3	12 087.9	11 994.4
Room occupancy rate (%)	63.5	64.2	63.7
Takings from accommodation (\$'000)	1 499 344	1 485 716	1 513 029
Average takings per room night occupied (\$)	126.0	122.9	126.1

Accommodation takings

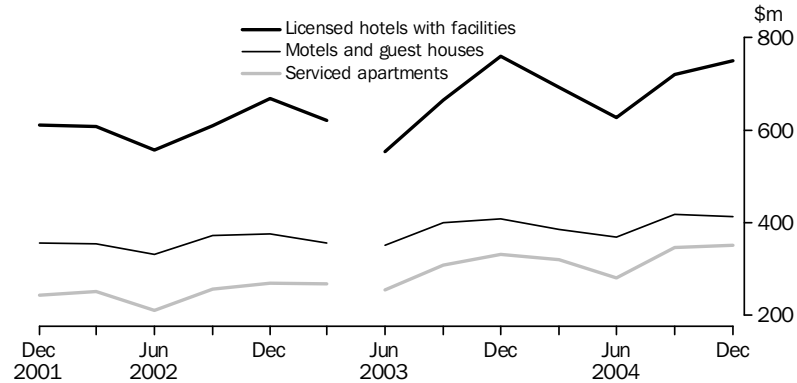
In December quarter 2004, accommodation takings for licensed hotels with facilities, motels and guest houses and serviced apartments combined were \$1,513.0 million. This was an increase of 0.9% (\$13.7 million) from December quarter 2003. The average takings per room night occupied for licensed hotels with facilities, motels and guest houses and serviced apartments combined was \$126.10.

Licensed hotels with facilities were the highest contributor to accommodation takings with \$749.9 million (49.6%). Average takings per room night occupied in December quarter 2004 were highest for licensed hotels with facilities at \$148.90.

## SUMMARY OF FINDINGS *continued*

### Accommodation takings *continued*

#### ACCOMMODATION TAKINGS (a), Original—Australia



(a) Break in time series between the March and June quarters 2003. See Explanatory Notes.

The contributions of accommodation takings in December quarter 2004 for licensed hotels with facilities, motels and guest houses and serviced apartments combined were highest in New South Wales (33.5%) and Queensland (28.2%) and lowest in Australian Capital Territory (2.3%).

### Room nights occupied

Total room nights occupied were 12.0 million in December quarter 2004 for licensed hotels with facilities, motels and guest houses and serviced apartments combined. Room nights occupied increased by 0.8% (0.1 million) from December quarter 2003 to December quarter 2004.

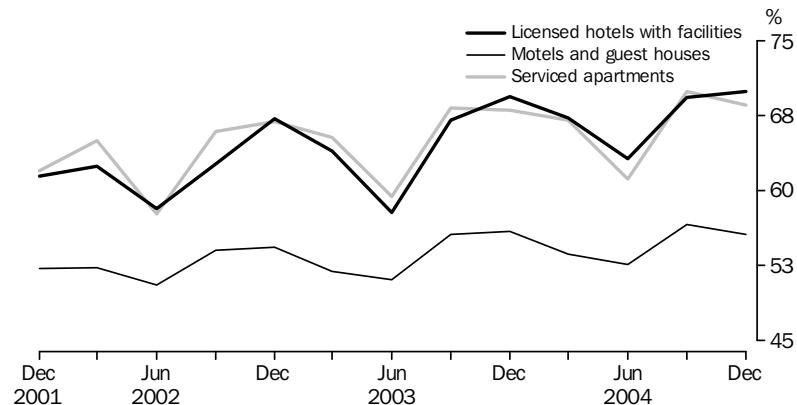
Licensed hotels with facilities represented 5.0 million (42.0%) of the total room nights occupied, while motels and guest houses represented 4.3 million (36.1%) and serviced apartments represented 2.6 million (21.9%).

### Room occupancy rate

The room occupancy rate for licensed hotels with facilities, motels and guest houses and serviced apartments combined increased 0.2 percentage points to 63.7% in December quarter 2004 compared with December quarter 2003.

Queensland recorded the highest room occupancy rate for licensed hotels with facilities, motels and guest houses and serviced apartments combined with 67.3%. This was followed by Australian Capital Territory (66.4%) and New South Wales (63.8%).

#### ROOM OCCUPANCY RATES (a), Original—Australia



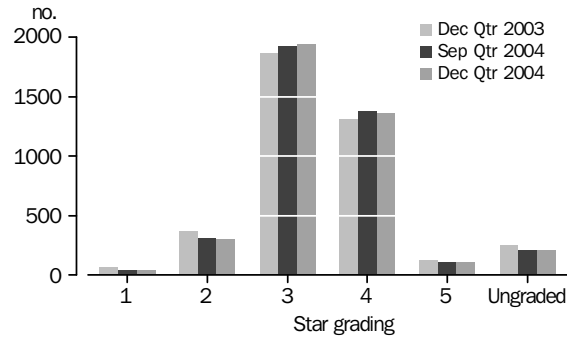
(a) Room occupancy rates are not subject to a break in series.

## SUMMARY OF FINDINGS *continued*

### Star grading

Almost half (48.9%) of all licensed hotels with facilities, motels and guest houses and serviced apartments were graded as 3 star in December quarter 2004 with a further 34.4% graded as 4 star. The proportion of establishments graded as 3 and 4 star has increased since the December quarter 2003, while lower and ungraded establishment numbers have decreased. The proportion graded as 5 star establishments has remained relatively stable over this time, comprising 2.8% of all establishments in December quarter 2004.

STAR GRADING, Number of establishments—Australia



# LIST OF TABLES

page

## HOTELS, MOTELS AND GUEST HOUSES AND SERVICED APARTMENTS

### ORIGINAL, SEASONALLY ADJUSTED AND TREND

<b>1</b> Australia	9
--------------------	---

### SUMMARY

<b>2</b> Australia	10
--------------------	----

### STAR GRADING

<b>3</b> Australia	12
<b>4</b> New South Wales	14
<b>5</b> Victoria	16
<b>6</b> Queensland	18
<b>7</b> South Australia	20
<b>8</b> Western Australia	22
<b>9</b> Tasmania	24
<b>10</b> Northern Territory	26
<b>11</b> Australian Capital Territory	28

### TOURISM REGIONS

<b>12</b> New South Wales	30
<b>13</b> Victoria	32
<b>14</b> Queensland	34
<b>15</b> South Australia	36
<b>16</b> Western Australia	38
<b>17</b> Tasmania	39
<b>18</b> Northern Territory and Australian Capital Territory	40





	ORIGINAL		SEASONALLY ADJUSTED		TREND	
	<i>Room occupancy rate</i>	<i>Takings from accommodation(a)</i>	<i>Room occupancy rate</i>	<i>Takings from accommodation(a)</i>	<i>Room occupancy rate</i>	<i>Takings from accommodation(a)</i>
	%	'000	%	'000	%	'000
<b>2001</b>						
June Quarter	55.2	1 111 337	58.0	1 213 197	57.6	1 205 242
September Quarter	58.7	1 226 522	57.3	1 199 107	57.3	1 187 826
December Quarter	57.6	1 209 554	56.6	1 150 686	57.3	1 180 412
<b>2002</b>						
March Quarter	58.6	1 213 991	58.1	1 203 838	57.5	1 187 188
June Quarter	54.8	1 100 074	58.0	1 207 373	58.1	1 203 697
September Quarter	59.6	1 236 869	58.4	1 208 861	58.6	1 218 961
December Quarter	61.7	1 314 053	60.1	1 244 255	58.7	1 224 616
<b>2003</b>						
March Quarter	59.1	1 244 695	59.1	1 238 158	58.9	1 232 565
June Quarter	55.3	1 159 500	58.5	1 275 957	59.4	1 297 852
September Quarter	62.5	1 373 488	60.9	1 337 715	60.5	1 342 438
December Quarter	63.5	1 499 344	62.0	1 420 570	61.3	1 382 056
<b>2004</b>						
March Quarter	61.6	1 398 573	61.1	1 379 203	61.8	1 404 229
June Quarter	58.4	1 277 463	61.8	1 408 281	61.9	1 413 421
September Quarter	64.2	1 485 716	62.5	1 443 533	62.2	1 426 740
December Quarter	63.7	1 513 029	62.2	1 431 481	62.5	1 443 286

(a) Break in time series between the March and June quarters 2003. See Explanatory Notes.

<i>Period</i>	<i>Establishments(a)</i> no.	<i>Rooms(a)</i> no.	<i>Bed spaces(a)</i> no.	<i>Persons employed(a)</i> no.	<i>Room nights occupied(a)</i> '000	<i>Room occupancy rate</i> %
.....						
LICENSED HOTELS WITH FACILITIES						
<b>2003</b>						
September Quarter	794	77 914	203 346	70 105	4 810	67.1
December Quarter	796	78 720	202 962	70 046	4 996	69.4
<b>2004</b>						
March Quarter	791	78 474	202 354	69 472	4 798	67.3
June Quarter	793	78 796	204 856	69 629	4 506	63.2
September Quarter	789	78 777	205 297	70 088	5 022	69.3
December Quarter	786	78 574	205 304	69 883	5 035	70.0
<b>Year ended December 2003</b>	..	..	..	..	18 373	64.6
<b>Year ended December 2004</b>	..	..	..	..	19 362	67.4
.....						
MOTELS AND GUEST HOUSES WITH FACILITIES						
<b>2003</b>						
September Quarter	2 416	85 198	247 709	30 074	4 356	55.6
December Quarter	2 415	85 390	246 107	29 473	4 380	55.9
<b>2004</b>						
March Quarter	2 404	84 903	244 265	29 432	4 137	53.7
June Quarter	2 404	84 532	244 770	29 069	4 023	52.6
September Quarter	2 396	84 452	244 387	29 244	4 397	56.7
December Quarter	2 390	85 185	246 227	28 771	4 331	55.6
<b>Year ended December 2003</b>	..	..	..	..	16 614	53.7
<b>Year ended December 2004</b>	..	..	..	..	16 888	54.6
.....						
SERVICED APARTMENTS						
<b>2003</b>						
September Quarter	775	39 921	129 429	13 268	2 492	68.3
December Quarter	781	40 351	131 183	13 489	2 525	68.1
<b>2004</b>						
March Quarter	786	40 734	132 240	13 371	2 481	67.0
June Quarter	795	41 104	133 268	13 808	2 278	61.2
September Quarter	800	41 601	134 186	13 714	2 669	69.9
December Quarter	797	41 736	134 686	13 762	2 629	68.6
<b>Year ended December 2003</b>	..	..	..	..	9 257	65.3
<b>Year ended December 2004</b>	..	..	..	..	10 057	66.7
.....						
HOTELS, MOTELS AND SERVICED APARTMENTS						
<b>2003</b>						
September Quarter	3 985	203 033	580 484	113 447	11 658	62.5
December Quarter	3 992	204 461	580 252	113 008	11 901	63.5
<b>2004</b>						
March Quarter	3 981	204 111	578 859	112 275	11 417	61.6
June Quarter	3 992	204 432	582 894	112 506	10 808	58.4
September Quarter	3 985	204 830	583 870	113 046	12 088	64.2
December Quarter	3 973	205 495	586 217	112 416	11 994	63.7
<b>Year ended December 2003</b>	..	..	..	..	44 244	60.1
<b>Year ended December 2004</b>	..	..	..	..	46 307	62.0

.. not applicable

(a) Break in time series between the March and June quarters 2003.  
See Explanatory Notes.

Period	Guest nights occupied (a)	Bed occupancy rate	Guest arrivals (a)	Average length of stay	Takings from accommodation (a)
	'000	%	'000	days	\$'000
.....					
LICENSED HOTELS WITH FACILITIES					
<b>2003</b>					
September Quarter	7 940	42.4	3 340	2.4	664 512
December Quarter	8 298	44.7	3 590	2.3	759 603
<b>2004</b>					
March Quarter	7 940	43.2	3 343	2.4	691 864
June Quarter	7 289	39.4	3 209	2.3	627 765
September Quarter	8 304	44.0	3 586	2.3	720 863
December Quarter	8 330	44.4	3 654	2.3	749 901
<b>Year ended December 2003</b>	30 225	40.7	12 949	2.3	2 599 363
<b>Year ended December 2004</b>	31 864	42.7	13 792	2.3	2 790 393
.....					
MOTELS AND GUEST HOUSES WITH FACILITIES					
<b>2003</b>					
September Quarter	7 706	33.8	4 333	1.8	399 637
December Quarter	7 815	34.6	4 359	1.8	407 394
<b>2004</b>					
March Quarter	7 379	33.3	4 067	1.8	386 199
June Quarter	6 985	31.6	3 984	1.8	368 779
September Quarter	7 809	34.8	4 412	1.8	418 253
December Quarter	7 656	34.0	4 291	1.8	412 426
<b>Year ended December 2003</b>	29 318	32.6	16 371	1.8	1 514 027
<b>Year ended December 2004</b>	29 829	33.4	16 755	1.8	1 585 656
.....					
SERVICED APARTMENTS					
<b>2003</b>					
September Quarter	5 447	46.0	1 495	3.6	309 339
December Quarter	5 701	47.3	1 589	3.6	332 348
<b>2004</b>					
March Quarter	5 602	46.7	1 513	3.7	320 510
June Quarter	4 903	40.6	1 420	3.5	280 920
September Quarter	5 883	47.8	1 654	3.6	346 601
December Quarter	5 859	47.4	1 694	3.5	350 702
<b>Year ended December 2003</b>	20 420	44.3	5 645	3.6	1 163 638
<b>Year ended December 2004</b>	22 247	45.7	6 281	3.5	1 298 733
.....					
HOTELS, MOTELS AND SERVICED APARTMENTS					
<b>2003</b>					
September Quarter	21 093	39.6	9 167	2.3	1 373 488
December Quarter	21 814	41.0	9 539	2.3	1 499 344
<b>2004</b>					
March Quarter	20 921	39.8	8 923	2.3	1 398 573
June Quarter	19 177	36.4	8 613	2.2	1 277 463
September Quarter	21 996	41.0	9 653	2.3	1 485 716
December Quarter	21 845	40.7	9 639	2.3	1 513 029
<b>Year ended December 2003</b>	79 963	38.0	34 965	2.3	5 277 028
<b>Year ended December 2004</b>	83 940	39.5	36 828	2.3	5 674 782

(a) Break in time series between the March and June quarters 2003. See Explanatory Notes.

Period	Licensed hotels with facilities	Motels and guest houses	Serviced apartments	STAR GRADING						Ungraded	Total
				1	2	3	4	5			
ESTABLISHMENTS, CAPACITY AND EMPLOYMENT (no.)											
<b>December Quarter 2003</b>											
Establishments	796	2 415	781	67	373	1 865	1 311	124	252	3 992	
Rooms	78 720	85 390	40 351	2 707	11 470	68 317	89 449	24 300	8 218	204 461	
Bed spaces	202 962	246 107	131 183	8 470	32 704	198 736	258 055	60 115	22 172	580 252	
Persons employed	70 046	29 473	13 489	587	4 970	23 587	45 144	35 033	3 687	113 008	
<b>December Quarter 2004</b>											
Establishments	786	2 390	797	42	302	1 944	1 368	113	204	3 973	
Rooms	78 574	85 185	41 736	1 269	9 672	71 521	93 012	23 431	6 590	205 495	
Bed spaces	205 304	246 227	134 686	4 520	27 496	208 205	269 094	58 487	18 415	586 217	
Persons employed	69 883	28 771	13 762	467	3 768	24 531	47 210	33 591	2 849	112 416	
ROOM NIGHTS OCCUPIED ('000)											
<b>2003</b>											
December Quarter	4 996.5	4 380.2	2 524.7	125.7	459.1	3 600.1	5 699.6	1 678.3	338.6	11 901.3	
<b>2004</b>											
October	1 766.5	1 578.0	936.9	12.4	143.6	1 343.2	2 117.5	566.9	97.8	4 281.4	
November	1 746.0	1 469.6	875.0	11.8	135.6	1 244.2	2 043.8	563.2	92.0	4 090.5	
December	1 522.7	1 283.1	816.7	10.3	126.1	1 118.4	1 800.6	485.2	81.9	3 622.5	
December Quarter	5 035.1	4 330.7	2 628.6	34.5	405.3	3 705.8	5 961.9	1 615.2	271.7	11 994.4	
ROOM OCCUPANCY RATE (%)											
<b>2003</b>											
December Quarter	69.4	55.9	68.1	52.2	43.7	57.4	69.6	75.1	45.5	63.5	
<b>2004</b>											
October	72.9	60.2	72.5	39.1	48.7	60.9	73.5	78.0	49.2	67.6	
November	74.3	57.9	70.0	31.0	47.5	58.3	73.3	80.2	48.6	66.6	
December	62.7	48.9	63.2	26.1	42.6	50.7	62.5	66.9	42.4	57.1	
December Quarter	70.0	55.6	68.6	31.6	46.3	56.6	69.7	75.0	46.7	63.7	
GUEST NIGHTS OCCUPIED ('000)											
<b>2003</b>											
December Quarter	8 298.1	7 814.6	5 701.1	232.3	827.8	6 773.8	10 612.1	2 778.4	589.4	21 813.8	
<b>2004</b>											
October	2 888.7	2 788.4	2 061.2	20.5	251.9	2 493.6	3 914.7	893.0	164.8	7 738.4	
November	2 779.2	2 487.4	1 837.9	18.9	226.6	2 218.2	3 607.8	881.0	152.0	7 104.5	
December	2 662.4	2 380.3	1 959.7	16.7	230.7	2 185.7	3 573.4	847.2	148.5	7 002.4	
December Quarter	8 330.4	7 656.2	5 858.7	56.1	709.2	6 897.5	11 096.0	2 621.2	465.3	21 845.3	
BED OCCUPANCY RATE (%)											
<b>2003</b>											
December Quarter	44.7	34.6	47.3	31.6	27.7	37.1	44.8	50.3	29.4	41.0	
<b>2004</b>											
October	45.8	36.8	49.5	21.3	30.1	38.9	47.0	49.3	29.8	42.9	
November	45.3	33.9	45.6	13.9	28.0	35.7	44.7	50.3	28.9	40.6	
December	42.0	31.4	47.1	11.9	27.5	34.1	42.9	46.8	28.0	38.7	
December Quarter	44.4	34.0	47.4	15.1	28.6	36.2	44.9	48.8	28.9	40.7	

(a) Star grade classifications have been revised. See Explanatory Notes.

Period	Licensed hotels with facilities	Motels and guest houses	Serviced apartments	STAR GRADING						Total
				1	2	3	4	5	Ungraded	
GUEST ARRIVALS ('000)										
<b>2003</b>										
December Quarter	3 590.0	4 359.1	1 589.4	158.1	459.2	3 319.2	4 264.0	1 086.4	251.6	9 538.6
<b>2004</b>										
October	1 261.2	1 557.4	593.1	13.3	143.3	1 250.0	1 578.0	353.2	73.9	3 411.7
November	1 221.1	1 392.3	546.5	12.0	130.0	1 117.4	1 485.6	348.4	66.6	3 159.9
December	1 171.4	1 341.4	554.8	11.3	131.2	1 094.7	1 428.1	339.2	63.0	3 067.6
December Quarter	3 653.7	4 291.1	1 694.4	36.6	404.5	3 462.1	4 491.7	1 040.8	203.5	9 639.2
AVERAGE LENGTH OF STAY (days)										
<b>2003</b>										
December Quarter	2.3	1.8	3.6	1.5	1.8	2.0	2.5	2.6	2.3	2.3
<b>2004</b>										
October	2.3	1.8	3.5	1.5	1.8	2.0	2.5	2.5	2.2	2.3
November	2.3	1.8	3.4	1.6	1.7	2.0	2.4	2.5	2.3	2.2
December	2.3	1.8	3.5	1.5	1.8	2.0	2.5	2.5	2.4	2.3
December Quarter	2.3	1.8	3.5	1.5	1.8	2.0	2.5	2.5	2.3	2.3
TAKINGS FROM ACCOMMODATION (\$'000)										
<b>2003</b>										
December Quarter	759 603	407 394	332 348	7 502	32 174	324 329	741 462	360 269	33 608	1 499 344
<b>2004</b>										
October	260 858	149 508	123 774	749	9 680	122 208	274 605	116 681	10 219	534 141
November	258 335	138 449	112 192	726	9 125	111 347	261 433	116 887	9 458	508 976
December	230 708	124 469	114 735	618	9 010	104 877	241 787	104 474	9 146	469 912
December Quarter	749 901	412 426	350 702	2 094	27 814	338 432	777 825	338 041	28 823	1 513 029
AVERAGE TAKINGS PER ROOM NIGHT OCCUPIED (\$)										
<b>2003</b>										
December Quarter	152.0	93.0	131.6	59.7	70.1	90.1	130.1	214.7	99.3	126.0
<b>2004</b>										
October	147.7	94.7	132.1	60.5	67.4	91.0	129.7	205.8	104.5	124.8
November	148.0	94.2	128.2	61.6	67.3	89.5	127.9	207.5	102.8	124.4
December	151.5	97.0	140.5	60.1	71.4	93.8	134.3	215.3	111.7	129.7
December Quarter	148.9	95.2	133.4	60.8	68.6	91.3	130.5	209.3	106.1	126.1
AVERAGE TAKINGS PER AVAILABLE ROOM NIGHT (\$)										
<b>2003</b>										
December Quarter	105.5	52.0	89.6	31.1	30.6	51.7	90.5	161.2	45.1	80.0
<b>2004</b>										
October	107.7	57.0	95.8	23.7	32.8	55.4	95.4	160.6	51.4	84.3
November	110.0	54.5	89.8	19.1	32.0	52.1	93.8	166.5	49.9	82.9
December	95.1	47.4	88.8	15.7	30.5	47.6	83.9	144.0	47.3	74.1
December Quarter	104.2	53.0	91.5	19.2	31.7	51.7	91.0	157.0	49.5	80.4

(a) Star grade classifications have been revised. See Explanatory Notes.

Period	Licensed hotels with facilities	Motels and guest houses	Serviced apartments	STAR GRADING					Ungraded	Total
				1	2	3	4	5		
ESTABLISHMENTS, CAPACITY AND EMPLOYMENT (no.)										
<b>December Quarter 2003</b>										
Establishments	201	992	157	35	136	733	338	29	79	1 350
Rooms	23 202	32 657	8 351	1 592	4 078	24 451	24 455	7 160	2 474	64 210
Bed spaces	55 998	94 761	26 266	5 474	11 813	70 632	66 225	16 137	6 744	177 025
Persons employed	18 716	10 895	2 899	231	1 635	7 698	12 866	9 193	887	32 510
<b>December Quarter 2004</b>										
Establishments	197	985	164	21	101	767	362	28	67	1 346
Rooms	23 014	32 700	8 910	835	3 311	25 599	25 639	7 131	2 109	64 624
Bed spaces	57 200	94 936	28 043	3 282	9 510	73 400	70 478	16 776	6 733	180 179
Persons employed	18 836	10 589	2 840	163	973	7 583	13 614	9 193	739	32 265
ROOM NIGHTS OCCUPIED ('000)										
<b>2003</b>										
December Quarter	1 573.8	1 683.4	545.9	69.6	177.0	1 297.6	1 653.3	512.6	92.9	3 803.1
<b>2004</b>										
October	532.5	584.3	192.0	7.2	52.2	463.0	589.7	170.7	25.9	1 308.8
November	551.5	542.1	187.7	6.6	50.1	434.7	582.7	182.2	25.0	1 281.3
December	491.1	491.3	184.3	6.4	48.8	395.7	530.8	160.8	24.1	1 166.7
December Quarter	1 575.0	1 617.7	564.0	20.1	151.1	1 293.5	1 703.2	513.7	75.0	3 756.7
ROOM OCCUPANCY RATE (%)										
<b>2003</b>										
December Quarter	74.0	56.3	71.2	50.2	47.5	57.8	73.6	77.8	41.7	64.6
<b>2004</b>										
October	75.9	58.2	69.7	39.6	52.9	58.8	74.3	77.2	42.1	66.1
November	80.4	55.8	70.5	26.2	52.5	57.0	75.9	85.5	42.1	66.6
December	69.4	48.9	66.9	24.6	49.5	50.2	66.8	73.0	40.9	58.7
December Quarter	75.2	54.3	69.0	29.1	51.6	55.3	72.3	78.5	41.7	63.8
GUEST NIGHTS OCCUPIED ('000)										
<b>2003</b>										
December Quarter	2 538.4	3 062.2	1 160.3	130.5	333.6	2 402.4	2 910.0	816.1	168.2	6 760.9
<b>2004</b>										
October	829.7	1 048.7	402.0	12.0	97.0	838.3	1 025.4	257.6	50.0	2 280.3
November	852.2	919.8	379.1	10.8	88.1	745.0	977.2	281.1	48.9	2 151.1
December	826.8	920.6	426.4	11.0	93.7	748.2	995.7	274.3	50.9	2 173.8
December Quarter	2 508.6	2 889.1	1 207.5	33.8	278.8	2 331.5	2 998.2	813.1	149.8	6 605.3
BED OCCUPANCY RATE (%)										
<b>2003</b>										
December Quarter	49.7	35.3	48.1	28.4	31.0	37.1	47.9	55.0	27.7	41.8
<b>2004</b>										
October	48.2	36.0	46.6	20.8	34.6	37.2	47.0	49.5	25.3	41.5
November	50.0	32.6	45.4	11.0	32.5	34.1	46.3	56.2	25.6	40.1
December	47.1	31.6	49.5	10.8	33.5	33.1	45.6	53.0	27.3	39.3
December Quarter	48.4	33.4	47.2	13.1	33.5	34.8	46.3	52.9	26.1	40.3

(a) Star grade classifications have been revised. See Explanatory Notes.

Period	Licensed hotels with facilities	Motels and guest houses	Serviced apartments	STAR GRADING						Ungraded	Total
				1	2	3	4	5			
GUEST ARRIVALS ('000)											
<b>2003</b>											
December Quarter	1 085.2	1 872.6	372.0	85.4	192.7	1 342.6	1 288.0	342.1	78.9	3 329.8	
<b>2004</b>											
October	347.1	630.0	133.6	8.6	56.9	476.1	446.9	100.1	22.1	1 110.6	
November	352.1	556.7	131.5	7.6	51.9	422.8	431.7	105.1	21.2	1 040.3	
December	336.9	561.6	135.3	7.9	54.6	430.6	419.5	100.8	20.3	1 033.7	
December Quarter	1 036.1	1 748.2	400.3	24.1	163.3	1 329.5	1 298.1	306.0	63.6	3 184.6	
AVERAGE LENGTH OF STAY (days)											
<b>2003</b>											
December Quarter	2.3	1.6	3.1	1.5	1.7	1.8	2.3	2.4	2.1	2.0	
<b>2004</b>											
October	2.4	1.7	3.0	1.4	1.7	1.8	2.3	2.6	2.3	2.1	
November	2.4	1.7	2.9	1.4	1.7	1.8	2.3	2.7	2.3	2.1	
December	2.5	1.6	3.2	1.4	1.7	1.7	2.4	2.7	2.5	2.1	
December Quarter	2.4	1.7	3.0	1.4	1.7	1.8	2.3	2.7	2.4	2.1	
TAKINGS FROM ACCOMMODATION (\$'000)											
<b>2003</b>											
December Quarter	279 584	159 906	86 949	4 156	13 571	122 030	243 324	132 913	10 445	526 439	
<b>2004</b>											
October	86 929	56 221	28 135	419	3 619	42 375	82 891	38 827	3 154	171 285	
November	92 783	51 588	28 094	395	3 550	39 446	82 654	43 386	3 033	172 465	
December	85 096	48 870	29 671	387	3 682	37 846	78 782	39 544	3 396	163 637	
December Quarter	264 808	156 679	85 900	1 201	10 851	119 667	244 327	121 757	9 584	507 387	
AVERAGE TAKINGS PER ROOM NIGHT OCCUPIED (\$)											
<b>2003</b>											
December Quarter	177.7	95.0	159.3	59.7	76.7	94.0	147.2	259.3	112.4	138.4	
<b>2004</b>											
October	163.3	96.2	146.6	58.2	69.3	91.5	140.6	227.4	121.9	130.9	
November	168.2	95.2	149.6	60.2	70.9	90.7	141.9	238.1	121.3	134.6	
December	173.3	99.5	161.0	60.7	75.4	95.6	148.4	245.9	140.8	140.3	
December Quarter	168.1	96.9	152.3	59.7	71.8	92.5	143.4	237.0	127.8	135.1	
AVERAGE TAKINGS PER AVAILABLE ROOM NIGHT (\$)											
<b>2003</b>											
December Quarter	131.5	53.4	113.4	29.9	36.4	54.4	108.3	201.8	46.9	89.5	
<b>2004</b>											
October	123.9	56.0	102.2	23.0	36.7	53.8	104.5	175.6	51.3	86.5	
November	135.3	53.1	105.4	15.8	37.2	51.7	107.6	203.7	51.0	89.6	
December	120.3	48.7	107.8	14.9	37.3	48.0	99.1	179.7	57.6	82.4	
December Quarter	126.4	52.6	105.1	17.4	37.1	51.2	103.7	186.1	53.3	86.1	

(a) Star grade classifications have been revised. See Explanatory Notes.

Period	Licensed hotels with facilities	Motels and guest houses	Serviced apartments	STAR GRADING						Ungraded	Total
				1	2	3	4	5			
ESTABLISHMENTS, CAPACITY AND EMPLOYMENT (no.)											
<b>December Quarter 2003</b>											
Establishments	136	502	108	5	50	353	293	22	23	746	
Rooms	13 649	16 065	5 754	292	1 399	11 679	16 748	4 542	808	35 468	
Bed spaces	31 168	46 084	18 075	892	4 249	32 318	45 680	9 702	2 486	95 327	
Persons employed	14 464	5 459	1 703	59	610	3 749	7 595	9 126	487	21 626	
<b>December Quarter 2004</b>											
Establishments	136	496	109	3	39	349	308	22	20	741	
Rooms	13 583	15 939	5 831	65	1 274	11 732	17 050	4 544	688	35 353	
Bed spaces	31 533	46 114	17 902	215	3 751	33 082	46 806	9 704	1 991	95 549	
Persons employed	14 330	5 302	1 596	76	501	3 518	7 586	9 102	445	21 228	
ROOM NIGHTS OCCUPIED ('000)											
<b>2003</b>											
December Quarter	849.4	762.2	363.6	19.7	45.2	569.5	978.7	327.6	34.5	1 975.2	
<b>2004</b>											
October	301.6	272.0	129.2	0.8	16.2	199.8	362.2	114.2	9.6	702.7	
November	312.8	256.4	130.5	0.9	15.8	190.4	364.4	117.8	10.4	699.7	
December	258.1	224.5	118.2	0.5	15.5	173.1	307.9	95.9	7.9	600.8	
December Quarter	872.5	752.9	377.9	2.2	47.4	563.3	1 034.4	328.0	27.9	2 003.3	
ROOM OCCUPANCY RATE (%)											
<b>2003</b>											
December Quarter	69.2	51.7	68.9	73.3	35.1	53.2	64.9	78.4	46.4	61.2	
<b>2004</b>											
October	71.8	55.8	71.6	39.8	41.0	55.9	68.5	81.1	48.0	64.6	
November	76.9	54.3	75.2	46.9	41.3	55.0	71.4	86.4	53.9	66.5	
December	61.4	46.1	65.9	25.6	39.2	48.5	58.4	68.1	39.6	55.3	
December Quarter	70.0	52.0	70.9	37.3	40.5	53.1	66.0	78.5	47.1	62.1	
GUEST NIGHTS OCCUPIED ('000)											
<b>2003</b>											
December Quarter	1 309.8	1 331.4	718.5	36.0	83.0	1 019.3	1 682.4	477.4	61.5	3 359.7	
<b>2004</b>											
October	460.6	474.2	242.4	1.3	29.7	361.3	606.5	162.3	16.2	1 177.2	
November	473.4	430.8	238.7	1.4	28.8	333.2	595.7	167.4	16.4	1 142.9	
December	421.1	404.1	246.0	0.9	29.4	319.4	559.9	147.9	13.6	1 071.2	
December Quarter	1 355.1	1 309.1	727.2	3.6	87.9	1 013.8	1 762.1	477.6	46.3	3 391.3	
BED OCCUPANCY RATE (%)											
<b>2003</b>											
December Quarter	46.5	31.5	43.3	43.8	21.2	34.4	40.6	53.5	26.9	38.6	
<b>2004</b>											
October	47.3	33.6	44.1	19.7	25.5	35.9	41.8	53.9	29.9	40.1	
November	50.2	31.5	45.1	22.4	25.6	34.2	42.5	57.5	31.2	40.3	
December	43.2	28.7	45.0	13.0	25.3	31.8	38.7	49.2	25.1	36.5	
December Quarter	46.9	31.3	44.7	18.3	25.5	34.0	41.0	53.5	28.7	39.0	

(a) Star grade classifications have been revised. See Explanatory Notes.



Period	Licensed hotels with facilities	Motels and guest houses	Serviced apartments	STAR GRADING						Ungraded	Total
				1	2	3	4	5			
GUEST ARRIVALS ('000)											
<b>2003</b>											
December Quarter	601.4	771.7	206.0	30.3	44.9	525.1	753.5	201.8	23.5	1 579.1	
<b>2004</b>											
October	213.7	281.5	73.6	1.0	18.4	190.6	275.4	75.1	8.4	568.8	
November	215.8	253.9	73.9	1.0	17.9	173.3	267.8	75.3	8.2	543.6	
December	195.1	241.9	74.2	0.6	18.3	165.7	251.9	68.0	6.7	511.2	
December Quarter	624.6	777.2	221.8	2.5	54.6	529.7	795.1	218.4	23.3	1 623.6	
AVERAGE LENGTH OF STAY (days)											
<b>2003</b>											
December Quarter	2.2	1.7	3.5	1.2	1.8	1.9	2.2	2.4	2.6	2.1	
<b>2004</b>											
October	2.2	1.7	3.3	1.4	1.6	1.9	2.2	2.2	1.9	2.1	
November	2.2	1.7	3.2	1.4	1.6	1.9	2.2	2.2	2.0	2.1	
December	2.2	1.7	3.3	1.5	1.6	1.9	2.2	2.2	2.0	2.1	
December Quarter	2.2	1.7	3.3	1.4	1.6	1.9	2.2	2.2	2.0	2.1	
TAKINGS FROM ACCOMMODATION (\$'000)											
<b>2003</b>											
December Quarter	132 315	73 320	52 905	1 121	2 889	51 054	130 232	68 558	4 686	258 540	
<b>2004</b>											
October	44 721	26 427	18 675	54	995	17 819	46 951	22 724	1 281	89 824	
November	47 423	25 298	19 173	57	972	17 184	48 166	24 164	1 353	91 895	
December	36 675	22 512	17 217	34	1 007	15 623	39 874	18 770	1 095	76 404	
December Quarter	128 819	74 237	55 066	145	2 974	50 626	134 991	65 658	3 729	258 123	
AVERAGE TAKINGS PER ROOM NIGHT OCCUPIED (\$)											
<b>2003</b>											
December Quarter	155.8	96.2	145.5	56.9	63.9	89.6	133.1	209.3	135.8	130.9	
<b>2004</b>											
October	148.3	97.2	144.6	67.4	61.5	89.2	129.6	198.9	133.9	127.8	
November	151.6	98.7	146.9	61.9	61.6	90.3	132.2	205.1	130.2	131.3	
December	142.1	100.3	145.6	66.3	65.1	90.2	129.5	195.7	138.6	127.2	
December Quarter	147.6	98.6	145.7	64.9	62.7	89.9	130.5	200.2	133.8	128.9	
AVERAGE TAKINGS PER AVAILABLE ROOM NIGHT (\$)											
<b>2003</b>											
December Quarter	107.8	49.8	100.2	41.7	22.4	47.7	86.3	164.1	63.0	80.1	
<b>2004</b>											
October	106.5	54.2	103.5	26.8	25.2	49.9	88.8	161.3	64.3	82.5	
November	116.7	53.5	110.5	29.0	25.4	49.6	94.4	177.3	70.1	87.3	
December	87.3	46.2	96.0	17.0	25.5	43.8	75.6	133.3	54.9	70.3	
December Quarter	103.3	51.3	103.3	24.2	25.4	47.7	86.2	157.1	63.0	80.0	

(a) Star grade classifications have been revised. See Explanatory Notes.

Period	Licensed hotels with facilities	Motels and guest houses	Serviced apartments	STAR GRADING					Ungraded	Total
				1	2	3	4	5		
ESTABLISHMENTS, CAPACITY AND EMPLOYMENT (no.)										
<b>December Quarter 2003</b>										
Establishments	172	516	328	12	81	410	414	43	56	1 016
Rooms	20 591	18 541	16 069	332	2 088	15 083	28 691	7 169	1 838	55 201
Bed spaces	61 764	54 349	53 052	884	6 113	47 181	89 237	20 665	5 085	169 165
Persons employed	20 636	6 506	5 066	101	1 038	5 242	13 454	11 625	748	32 208
<b>December Quarter 2004</b>										
Establishments	170	510	330	8	72	443	419	35	33	1 010
Rooms	20 545	18 608	16 320	np	2 001	16 798	29 008	6 450	np	55 473
Bed spaces	61 802	54 994	53 840	np	5 939	52 539	90 306	18 754	np	170 636
Persons employed	20 440	6 492	5 285	np	824	6 503	13 794	10 501	np	32 217
ROOM NIGHTS OCCUPIED ('000)										
<b>2003</b>										
December Quarter	1 349.0	1 057.1	1 011.9	16.8	91.4	895.4	1 853.1	472.4	89.0	3 417.9
<b>2004</b>										
October	474.1	390.6	377.4	np	33.6	359.6	676.6	151.1	np	1 242.1
November	442.2	365.9	337.3	np	31.8	327.5	627.8	139.3	np	1 145.3
December	405.5	319.1	320.0	1.4	29.7	301.8	572.4	123.2	16.3	1 044.7
December Quarter	1 321.8	1 075.6	1 034.7	np	95.0	988.9	1 876.8	413.6	np	3 432.1
ROOM OCCUPANCY RATE (%)										
<b>2003</b>										
December Quarter	71.2	62.0	68.5	55.1	47.6	64.5	70.2	71.6	52.6	67.3
<b>2004</b>										
October	74.4	67.7	74.6	np	54.1	69.1	75.3	75.6	np	72.2
November	71.7	65.5	68.9	np	53.0	65.0	72.1	72.0	np	68.8
December	63.7	55.3	63.3	28.3	47.8	58.0	63.7	61.6	49.5	60.8
December Quarter	69.9	62.8	68.9	np	51.6	64.0	70.3	69.7	np	67.3
GUEST NIGHTS OCCUPIED ('000)										
<b>2003</b>										
December Quarter	2 564.7	1 902.7	2 554.3	32.4	163.3	1 854.8	3 920.8	889.8	160.7	7 021.7
<b>2004</b>										
October	882.0	681.5	934.0	np	56.8	716.9	1 421.7	268.0	np	2 497.6
November	801.5	621.6	795.8	np	48.7	636.9	1 263.7	239.8	np	2 218.9
December	816.2	607.5	859.6	1.8	53.0	653.1	1 302.2	245.5	27.6	2 283.3
December Quarter	2 499.7	1 910.6	2 589.5	np	158.5	2 006.9	3 987.6	753.3	np	6 999.8
BED OCCUPANCY RATE (%)										
<b>2003</b>										
December Quarter	45.1	38.1	52.4	39.9	29.0	42.7	47.8	46.8	34.3	45.1
<b>2004</b>										
October	46.0	40.0	56.0	np	30.9	44.0	50.8	46.1	np	47.2
November	43.2	37.7	49.3	np	27.3	40.4	46.6	42.6	np	43.3
December	42.6	35.6	51.5	14.6	28.8	40.1	46.5	42.2	32.9	43.2
December Quarter	44.0	37.8	52.3	np	29.0	41.5	48.0	43.7	np	44.6

np not available for publication but included in totals where applicable, unless otherwise indicated

(a) Star grade classifications have been revised. See Explanatory Notes.

Period	Licensed hotels with facilities	Motels and guest houses	Serviced apartments	STAR GRADING						Ungraded	Total
				1	2	3	4	5			
GUEST ARRIVALS ('000)											
<b>2003</b>											
December Quarter	965.4	918.0	606.2	21.6	91.2	710.7	1 293.7	306.7	65.8	2 489.6	
<b>2004</b>											
October	341.7	336.1	222.0	np	29.0	287.5	476.7	94.1	np	899.8	
November	324.0	308.7	196.5	np	26.1	261.2	442.5	87.9	np	829.3	
December	330.0	303.6	200.7	0.9	27.2	262.3	445.4	88.2	10.2	834.2	
December Quarter	995.7	948.4	619.3	np	82.4	810.9	1 364.6	270.2	np	2 563.3	
AVERAGE LENGTH OF STAY (days)											
<b>2003</b>											
December Quarter	2.7	2.1	4.2	1.5	1.8	2.6	3.0	2.9	2.4	2.8	
<b>2004</b>											
October	2.6	2.0	4.2	np	2.0	2.5	3.0	2.8	np	2.8	
November	2.5	2.0	4.0	np	1.9	2.4	2.9	2.7	np	2.7	
December	2.5	2.0	4.3	1.9	1.9	2.5	2.9	2.8	2.7	2.7	
December Quarter	2.5	2.0	4.2	np	1.9	2.5	2.9	2.8	np	2.7	
TAKINGS FROM ACCOMMODATION (\$'000)											
<b>2003</b>											
December Quarter	199 977	94 138	118 793	1 073	6 328	79 061	220 570	97 576	8 300	412 907	
<b>2004</b>											
October	73 558	36 055	46 202	np	2 329	33 383	85 066	32 989	np	155 815	
November	64 051	33 305	37 414	np	2 152	29 317	73 221	28 461	np	134 770	
December	63 942	29 986	42 873	83	2 248	29 237	74 765	28 885	1 582	136 800	
December Quarter	201 551	99 345	126 489	np	6 729	91 936	233 052	90 334	np	427 385	
AVERAGE TAKINGS PER ROOM NIGHT OCCUPIED (\$)											
<b>2003</b>											
December Quarter	148.2	89.1	117.4	63.7	69.3	88.3	119.0	206.6	93.3	120.8	
<b>2004</b>											
October	155.1	92.3	122.4	np	69.4	92.8	125.7	218.3	np	125.4	
November	144.9	91.0	110.9	np	67.7	89.5	116.6	204.3	np	117.7	
December	157.7	94.0	134.0	59.9	75.8	96.9	130.6	234.5	97.3	130.9	
December Quarter	152.5	92.4	122.2	np	70.8	93.0	124.2	218.4	np	124.5	
AVERAGE TAKINGS PER AVAILABLE ROOM NIGHT (\$)											
<b>2003</b>											
December Quarter	105.6	55.2	80.4	35.1	32.9	57.0	83.6	147.9	49.1	81.3	
<b>2004</b>											
October	115.5	62.5	91.3	np	37.5	64.1	94.6	165.0	np	90.6	
November	103.9	59.7	76.4	np	35.9	58.2	84.1	147.1	np	81.0	
December	100.4	52.0	84.7	17.0	36.2	56.1	83.1	144.5	48.2	79.6	
December Quarter	106.6	58.0	84.2	np	36.6	59.5	87.3	152.2	np	83.7	

np not available for publication but included in totals where applicable, unless otherwise indicated

(a) Star grade classifications have been revised. See Explanatory Notes.

Period	Licensed hotels with facilities	Motels and guest houses	Serviced apartments	STAR GRADING						Ungraded	Total
				1	2	3	4	5			
ESTABLISHMENTS, CAPACITY AND EMPLOYMENT (no.)											
<b>December Quarter 2003</b>											
Establishments	66	146	34	7	44	114	65	9	7	246	
Rooms	4 766	5 272	1 606	np	1 629	3 633	4 027	2 027	np	11 644	
Bed spaces	11 248	15 537	5 565	np	4 169	10 747	11 954	4 558	np	32 350	
Persons employed	4 076	2 275	587	np	907	1 663	2 734	1 425	np	6 938	
<b>December Quarter 2004</b>											
Establishments	65	142	35	7	37	119	63	7	9	242	
Rooms	4 580	5 140	1 767	np	1 214	3 911	4 310	np	329	11 487	
Bed spaces	11 127	14 932	6 013	np	3 327	11 267	12 282	np	974	32 072	
Persons employed	4 230	2 155	642	np	827	1 835	2 972	np	94	7 027	
ROOM NIGHTS OCCUPIED ('000)											
<b>2003</b>											
December Quarter	260.6	271.1	101.3	np	57.1	183.3	240.9	139.3	np	633.0	
<b>2004</b>											
October	95.9	90.8	40.7	np	17.8	68.2	96.1	np	5.4	227.4	
November	99.8	90.8	42.3	np	16.8	65.3	102.4	np	6.7	232.9	
December	80.5	71.2	36.5	np	13.8	53.9	80.5	np	5.7	188.2	
December Quarter	276.3	252.8	119.5	np	48.3	187.3	279.0	np	17.7	648.5	
ROOM OCCUPANCY RATE (%)											
<b>2003</b>											
December Quarter	59.5	56.1	68.5	np	38.3	55.0	65.0	74.7	np	59.2	
<b>2004</b>											
October	67.6	57.0	74.3	np	47.2	56.2	72.0	np	52.9	63.9	
November	72.7	58.9	79.8	np	46.0	55.6	79.2	np	67.8	67.6	
December	56.7	44.7	66.6	np	36.6	44.4	60.2	np	55.4	52.9	
December Quarter	65.6	53.5	73.5	np	43.2	52.1	70.4	np	58.6	61.4	
GUEST NIGHTS OCCUPIED ('000)											
<b>2003</b>											
December Quarter	387.3	465.4	199.7	np	94.8	329.1	412.7	195.6	np	1 052.5	
<b>2004</b>											
October	145.1	155.6	75.5	np	30.1	118.3	161.3	np	9.0	376.1	
November	145.2	148.8	78.1	np	28.4	109.8	163.6	np	11.1	372.1	
December	126.9	130.1	73.7	np	25.5	101.6	141.1	np	10.7	330.7	
December Quarter	417.1	434.5	227.3	np	84.0	329.6	466.0	np	30.9	1 078.9	
BED OCCUPANCY RATE (%)											
<b>2003</b>											
December Quarter	37.5	32.7	39.0	np	24.9	33.4	37.5	46.7	np	35.4	
<b>2004</b>											
October	42.1	33.6	40.5	np	29.2	33.9	42.4	np	29.8	37.8	
November	43.5	33.2	43.3	np	28.4	32.5	44.4	np	38.1	38.7	
December	36.8	28.1	39.5	np	24.7	29.1	37.1	np	35.5	33.3	
December Quarter	40.7	31.6	41.1	np	27.5	31.8	41.2	np	34.5	36.6	

np not available for publication but included in totals where applicable, unless otherwise indicated

(a) Star grade classifications have been revised. See Explanatory Notes.

Period	Licensed hotels with facilities	Motels and guest houses	Serviced apartments	STAR GRADING						Ungraded	Total
				1	2	3	4	5			
GUEST ARRIVALS ('000)											
<b>2003</b>											
December Quarter	190.6	262.6	66.3	np	53.4	181.0	182.0	92.9	np	519.5	
<b>2004</b>											
October	69.4	92.0	25.5	np	17.0	68.9	70.8	np	3.6	186.9	
November	64.5	87.5	25.4	np	15.3	63.2	69.6	np	3.9	177.4	
December	60.8	76.7	24.9	np	13.4	58.2	61.9	np	4.1	162.4	
December Quarter	194.7	256.2	75.9	np	45.8	190.3	202.2	np	11.5	526.8	
AVERAGE LENGTH OF STAY (days)											
<b>2003</b>											
December Quarter	2.0	1.8	3.0	np	1.8	1.8	2.3	2.1	np	2.0	
<b>2004</b>											
October	2.1	1.7	3.0	np	1.8	1.7	2.3	np	2.5	2.0	
November	2.3	1.7	3.1	np	1.9	1.7	2.4	np	2.9	2.1	
December	2.1	1.7	3.0	np	1.9	1.7	2.3	np	2.6	2.0	
December Quarter	2.1	1.7	3.0	np	1.8	1.7	2.3	np	2.7	2.0	
TAKINGS FROM ACCOMMODATION (\$'000)											
<b>2003</b>											
December Quarter	32 173	24 452	11 633	np	3 570	14 985	27 829	20 879	np	68 258	
<b>2004</b>											
October	11 454	8 124	4 841	np	1 211	5 690	11 346	np	655	24 419	
November	12 533	8 221	5 302	np	1 144	5 457	12 318	np	1 018	26 056	
December	9 775	6 544	4 428	np	962	4 624	9 501	np	844	20 747	
December Quarter	33 762	22 889	14 570	np	3 318	15 770	33 165	np	2 517	71 221	
AVERAGE TAKINGS PER ROOM NIGHT OCCUPIED (\$)											
<b>2003</b>											
December Quarter	123.4	90.2	114.9	np	62.5	81.8	115.5	149.9	np	107.8	
<b>2004</b>											
October	119.4	89.5	119.0	np	68.2	83.5	118.0	np	121.3	107.4	
November	125.5	90.6	125.4	np	68.3	83.6	120.3	np	152.2	111.9	
December	121.4	91.9	121.3	np	69.8	85.8	118.1	np	149.4	110.2	
December Quarter	122.2	90.6	122.0	np	68.7	84.2	118.9	np	141.9	109.8	
AVERAGE TAKINGS PER AVAILABLE ROOM NIGHT (\$)											
<b>2003</b>											
December Quarter	73.5	50.6	78.7	np	23.9	45.0	75.1	112.0	np	63.9	
<b>2004</b>											
October	80.7	51.0	88.4	np	32.2	46.9	84.9	np	64.2	68.6	
November	91.2	53.3	100.0	np	31.4	46.5	95.3	np	103.1	75.6	
December	68.8	41.1	80.8	np	25.6	38.1	71.1	np	82.8	58.3	
December Quarter	80.1	48.4	89.6	np	29.7	43.8	83.6	np	83.1	67.4	

np not available for publication but included in totals where applicable, unless otherwise indicated

(a) Star grade classifications have been revised. See Explanatory Notes.

Period	Licensed hotels with facilities	Motels and guest houses	Serviced apartments	STAR GRADING						Ungraded	Total
				1	2	3	4	5			
ESTABLISHMENTS, CAPACITY AND EMPLOYMENT (no.)											
<b>December Quarter 2003</b>											
Establishments	128	130	85	2	21	134	107	17	62	343	
Rooms	9 510	6 145	4 836	np	np	7 371	7 420	2 799	2 233	20 491	
Bed spaces	23 959	15 764	16 159	np	np	19 635	21 800	7 685	5 282	55 882	
Persons employed	6 379	1 716	1 849	np	np	2 567	3 611	2 432	1 082	9 944	
<b>December Quarter 2004</b>											
Establishments	125	132	87	—	21	140	115	16	52	344	
Rooms	9 747	6 277	4 913	—	634	7 233	8 461	2 867	1 742	20 937	
Bed spaces	24 998	16 178	16 134	—	1 441	19 391	24 805	7 573	4 100	57 310	
Persons employed	6 125	1 782	2 015	—	187	2 582	4 213	2 265	675	9 922	
ROOM NIGHTS OCCUPIED ('000)											
<b>2003</b>											
December Quarter	560.2	273.0	281.5	np	np	355.5	459.0	188.7	85.2	1 114.8	
<b>2004</b>											
October	208.4	110.0	112.4	—	8.3	132.8	191.9	70.7	27.1	430.9	
November	194.3	98.9	99.7	—	7.3	119.5	179.8	63.1	23.2	392.8	
December	169.7	90.0	91.2	—	6.6	109.5	159.4	55.5	19.9	350.9	
December Quarter	572.5	298.9	303.3	—	22.1	361.8	531.0	189.3	70.3	1 174.6	
ROOM OCCUPANCY RATE (%)											
<b>2003</b>											
December Quarter	64.5	48.3	63.3	np	np	52.4	67.2	73.3	42.8	59.3	
<b>2004</b>											
October	69.0	57.1	73.8	—	42.0	59.2	73.7	79.6	50.3	66.6	
November	66.9	53.0	67.6	—	38.2	55.1	71.0	73.3	47.2	62.9	
December	56.5	46.5	59.9	—	33.7	48.8	60.8	62.5	39.2	54.3	
December Quarter	64.1	52.2	67.1	—	38.0	54.4	68.4	71.8	45.7	61.3	
GUEST NIGHTS OCCUPIED ('000)											
<b>2003</b>											
December Quarter	866.9	449.3	625.9	np	np	593.2	841.9	338.7	130.9	1 942.1	
<b>2004</b>											
October	321.9	193.4	244.1	—	12.2	226.0	363.8	117.2	40.1	759.3	
November	288.2	164.4	206.8	—	10.4	192.3	317.9	106.1	32.8	659.4	
December	280.5	163.2	215.0	—	9.8	196.9	317.1	103.7	31.3	658.7	
December Quarter	890.6	521.0	665.8	—	32.4	615.2	998.8	326.9	104.2	2 077.4	
BED OCCUPANCY RATE (%)											
<b>2003</b>											
December Quarter	39.7	31.0	42.1	np	np	32.8	42.0	47.9	28.1	37.9	
<b>2004</b>											
October	41.5	38.9	48.8	—	27.4	37.6	47.6	49.9	31.5	42.8	
November	38.7	34.2	42.7	—	24.0	33.1	42.8	46.7	28.8	38.6	
December	36.5	32.8	43.0	—	21.9	32.8	41.2	44.2	26.7	37.3	
December Quarter	38.9	35.3	44.9	—	24.4	34.5	43.9	46.9	29.1	39.6	

— nil or rounded to zero (including null cells)

(a) Star grade classifications have been revised. See Explanatory Notes.

np not available for publication but included in totals where applicable, unless otherwise indicated

Period	Licensed hotels with facilities	Motels and guest houses	Serviced apartments	STAR GRADING						Ungraded	Total
				1	2	3	4	5			
GUEST ARRIVALS ('000)											
<b>2003</b>											
December Quarter	404.5	207.7	175.6	np	np	263.7	342.3	113.0	52.8	787.7	
<b>2004</b>											
October	152.9	94.3	72.7	—	5.4	110.7	139.6	42.8	21.3	319.9	
November	137.0	75.9	61.4	—	4.5	91.0	122.3	40.3	16.3	274.3	
December	137.6	74.5	63.2	—	4.7	91.1	119.8	44.5	15.2	275.3	
December Quarter	427.5	244.7	197.3	—	14.6	292.8	381.7	127.6	52.8	869.5	
AVERAGE LENGTH OF STAY (days)											
<b>2003</b>											
December Quarter	2.1	2.2	3.6	np	np	2.2	2.5	3.0	2.5	2.5	
<b>2004</b>											
October	2.1	2.1	3.4	—	2.3	2.0	2.6	2.7	1.9	2.4	
November	2.1	2.2	3.4	—	2.3	2.1	2.6	2.6	2.0	2.4	
December	2.0	2.2	3.4	—	2.1	2.2	2.6	2.3	2.1	2.4	
December Quarter	2.1	2.1	3.4	—	2.2	2.1	2.6	2.6	2.0	2.4	
TAKINGS FROM ACCOMMODATION (\$'000)											
<b>2003</b>											
December Quarter	67 122	22 893	33 667	np	np	29 323	54 484	31 443	6 904	123 681	
<b>2004</b>											
October	25 156	9 384	14 723	—	536	11 434	22 826	12 347	2 120	49 264	
November	23 702	8 371	12 035	—	462	10 021	21 301	10 698	1 625	44 109	
December	20 934	7 992	11 901	—	407	9 690	19 900	9 349	1 480	40 827	
December Quarter	69 793	25 747	38 659	—	1 406	31 146	64 027	32 395	5 226	134 200	
AVERAGE TAKINGS PER ROOM NIGHT OCCUPIED (\$)											
<b>2003</b>											
December Quarter	119.8	83.9	119.6	np	np	82.5	118.7	166.6	81.0	110.9	
<b>2004</b>											
October	120.7	85.3	131.0	—	65.0	86.1	118.9	174.5	78.1	114.3	
November	122.0	84.6	120.8	—	63.6	83.9	118.5	169.6	70.0	112.3	
December	123.3	88.8	130.5	—	61.5	88.5	124.9	168.4	74.3	116.3	
December Quarter	121.9	86.1	127.5	—	63.5	86.1	120.6	171.1	74.3	114.2	
AVERAGE TAKINGS PER AVAILABLE ROOM NIGHT (\$)											
<b>2003</b>											
December Quarter	77.3	40.5	75.7	np	np	43.2	79.8	122.1	34.7	65.8	
<b>2004</b>											
October	83.3	48.7	96.7	—	27.3	51.0	87.6	138.9	39.3	76.1	
November	81.6	44.9	81.7	—	24.3	46.2	84.1	124.4	33.1	70.6	
December	69.7	41.3	78.1	—	20.7	43.2	75.9	105.2	29.1	63.2	
December Quarter	78.2	45.0	85.5	—	24.1	46.8	82.5	122.8	33.9	70.0	

— nil or rounded to zero (including null cells)

(a) Star grade classifications have been revised. See Explanatory Notes.

np not available for publication but included in totals where applicable, unless otherwise indicated

Period	Licensed hotels with facilities	Motels and guest houses	Serviced apartments	STAR GRADING					Ungraded	Total
				1	2	3	4	5		
ESTABLISHMENTS, CAPACITY AND EMPLOYMENT (no.)										
<b>December Quarter 2003</b>										
Establishments	54	57	32	1	15	71	46	—	10	143
Rooms	2 940	1 926	1 164	np	np	2 566	2 656	—	np	6 030
Bed spaces	8 199	5 633	4 005	np	np	7 714	7 798	—	np	17 837
Persons employed	2 563	1 076	605	np	np	1 502	2 286	—	np	4 244
<b>December Quarter 2004</b>										
Establishments	55	55	34	1	14	70	50	1	8	144
Rooms	3 040	1 903	1 285	np	np	2 493	3 013	np	np	6 228
Bed spaces	8 372	5 581	4 358	np	np	7 217	8 879	np	np	18 311
Persons employed	2 745	1 004	650	np	np	1 334	2 511	np	np	4 399
ROOM NIGHTS OCCUPIED ('000)										
<b>2003</b>										
December Quarter	166.0	103.2	73.6	np	np	136.9	177.0	—	np	342.8
<b>2004</b>										
October	58.4	35.9	27.7	np	np	46.4	67.5	np	np	122.0
November	60.6	37.7	26.4	np	np	46.5	69.7	np	np	124.7
December	51.8	32.8	23.7	np	np	41.1	59.4	np	np	108.2
December Quarter	170.8	106.3	77.8	np	np	133.9	196.6	np	np	354.9
ROOM OCCUPANCY RATE (%)										
<b>2003</b>										
December Quarter	61.4	58.3	68.8	np	np	58.0	72.4	—	np	61.8
<b>2004</b>										
October	62.0	61.0	69.5	np	np	60.0	72.3	np	np	63.2
November	66.5	66.0	68.6	np	np	62.1	77.2	np	np	66.8
December	54.9	55.4	59.4	np	np	53.1	63.6	np	np	56.0
December Quarter	61.1	60.7	65.8	np	np	58.4	70.9	np	np	61.9
GUEST NIGHTS OCCUPIED ('000)										
<b>2003</b>										
December Quarter	273.7	197.2	162.6	np	np	271.0	309.5	—	np	633.4
<b>2004</b>										
October	96.7	68.0	56.3	np	np	92.3	115.0	np	np	220.9
November	96.7	68.5	51.4	np	np	87.6	115.1	np	np	216.6
December	89.1	65.6	54.3	np	np	86.3	109.2	np	np	209.0
December Quarter	282.5	202.0	162.0	np	np	266.1	339.4	np	np	646.5
BED OCCUPANCY RATE (%)										
<b>2003</b>										
December Quarter	36.3	38.0	44.1	np	np	38.2	43.1	—	np	38.6
<b>2004</b>										
October	37.3	39.3	41.7	np	np	41.2	41.8	np	np	38.9
November	38.5	41.0	39.4	np	np	40.4	43.3	np	np	39.4
December	34.3	37.8	40.2	np	np	38.6	39.6	np	np	36.8
December Quarter	36.7	39.4	40.4	np	np	40.1	41.6	np	np	38.4

— nil or rounded to zero (including null cells)

np not available for publication but included in totals where applicable, unless otherwise indicated

(a) Star grade classifications have been revised. See Explanatory Notes.



Period	Licensed hotels with facilities	Motels and guest houses	Serviced apartments	STAR GRADING						Ungraded	Total
				1	2	3	4	5			
GUEST ARRIVALS ('000)											
<b>2003</b>											
December Quarter	149.5	110.7	73.4	np	np	153.1	149.4	—	np	333.7	
<b>2004</b>											
October	54.5	36.2	26.8	np	np	50.7	58.3	np	np	117.6	
November	57.7	37.5	25.1	np	np	51.2	59.8	np	np	120.2	
December	53.4	35.2	25.5	np	np	47.4	57.8	np	np	114.1	
December Quarter	165.6	108.8	77.4	np	np	149.2	175.9	np	np	351.8	
AVERAGE LENGTH OF STAY (days)											
<b>2003</b>											
December Quarter	1.8	1.8	2.2	np	np	1.8	2.1	—	np	1.9	
<b>2004</b>											
October	1.8	1.9	2.1	np	np	1.8	2.0	np	np	1.9	
November	1.7	1.8	2.1	np	np	1.7	1.9	np	np	1.8	
December	1.7	1.9	2.1	np	np	1.8	1.9	np	np	1.8	
December Quarter	1.7	1.9	2.1	np	np	1.8	1.9	np	np	1.8	
TAKINGS FROM ACCOMMODATION (\$'000)											
<b>2003</b>											
December Quarter	17 481	10 498	9 158	np	np	12 471	22 452	—	np	37 138	
<b>2004</b>											
October	6 523	3 742	3 470	np	np	4 317	8 722	np	np	13 735	
November	6 844	3 980	3 376	np	np	4 384	9 009	np	np	14 200	
December	6 120	3 578	3 200	np	np	3 945	8 159	np	np	12 899	
December Quarter	19 488	11 300	10 046	np	np	12 646	25 890	np	np	40 835	
AVERAGE TAKINGS PER ROOM NIGHT OCCUPIED (\$)											
<b>2003</b>											
December Quarter	105.3	101.7	124.4	np	np	91.1	126.8	—	np	108.3	
<b>2004</b>											
October	111.7	104.2	125.3	np	np	93.1	129.3	np	np	112.6	
November	112.9	105.7	127.6	np	np	94.4	129.2	np	np	113.9	
December	118.2	109.2	135.3	np	np	96.1	137.3	np	np	119.2	
December Quarter	114.1	106.3	129.1	np	np	94.5	131.7	np	np	115.1	
AVERAGE TAKINGS PER AVAILABLE ROOM NIGHT (\$)											
<b>2003</b>											
December Quarter	64.6	59.2	85.5	np	np	52.8	91.9	—	np	66.9	
<b>2004</b>											
October	69.2	63.5	87.1	np	np	55.9	93.5	np	np	71.2	
November	75.0	69.8	87.6	np	np	58.6	99.7	np	np	76.0	
December	64.9	60.5	80.3	np	np	51.0	87.2	np	np	66.8	
December Quarter	69.7	64.6	85.0	np	np	55.1	93.4	np	np	71.3	

— nil or rounded to zero (including null cells)

np not available for publication but included in totals where applicable, unless otherwise indicated

(a) Star grade classifications have been revised. See Explanatory Notes.

Period	Licensed hotels with facilities	Motels and guest houses	Serviced apartments	STAR GRADING					Ungraded	Total
				1	2	3	4	5		
ESTABLISHMENTS, CAPACITY AND EMPLOYMENT (no.)										
<b>December Quarter 2003</b>										
Establishments	24	46	20	4	17	34	19	3	13	90
Rooms	2 150	2 949	1 317	118	725	2 218	2 645	np	np	6 416
Bed spaces	5 829	8 784	4 108	332	1 980	6 718	7 909	np	np	18 721
Persons employed	1 655	838	359	50	214	630	1 161	np	np	2 852
<b>December Quarter 2004</b>										
Establishments	23	46	21	2	14	38	20	3	13	90
Rooms	2 136	2 915	1 463	np	605	2 290	2 633	572	np	6 514
Bed spaces	5 653	8 626	4 393	np	1 567	6 930	7 832	1 139	np	18 672
Persons employed	1 691	793	349	np	194	611	1 115	716	np	2 833
ROOM NIGHTS OCCUPIED ('000)										
<b>2003</b>										
December Quarter	105.9	124.8	61.5	4.3	24.2	89.5	141.0	np	np	292.3
<b>2004</b>										
October	49.4	58.6	28.2	np	8.3	43.5	62.9	14.8	np	136.2
November	40.8	45.1	23.3	np	6.5	33.1	51.0	12.9	np	109.3
December	30.9	30.9	19.8	np	5.1	24.1	37.0	10.7	np	81.6
December Quarter	121.1	134.6	71.3	np	20.0	100.7	150.9	38.4	np	327.1
ROOM OCCUPANCY RATE (%)										
<b>2003</b>										
December Quarter	53.8	46.0	50.8	39.8	36.3	43.9	57.9	np	np	49.6
<b>2004</b>										
October	74.6	64.9	62.2	np	44.5	61.3	77.1	83.6	np	67.5
November	63.7	51.6	53.2	np	35.9	48.1	64.6	75.2	np	55.9
December	46.7	34.2	43.6	np	27.4	33.9	45.3	60.2	np	40.4
December Quarter	61.6	50.2	53.0	np	35.9	47.8	62.3	72.9	np	54.6
GUEST NIGHTS OCCUPIED ('000)										
<b>2003</b>										
December Quarter	164.1	212.7	122.9	8.4	37.5	168.0	225.7	np	np	499.7
<b>2004</b>										
October	82.6	101.4	53.3	np	13.3	81.0	107.6	23.6	np	237.4
November	63.3	76.2	41.9	np	9.6	61.2	81.1	19.8	np	181.5
December	48.7	50.5	40.2	np	7.7	46.0	60.2	17.4	np	139.4
December Quarter	194.6	228.2	135.5	np	30.6	188.2	248.8	60.7	np	558.3
BED OCCUPANCY RATE (%)										
<b>2003</b>										
December Quarter	30.8	26.3	32.5	27.4	20.6	27.2	31.0	np	np	29.1
<b>2004</b>										
October	47.1	37.9	39.2	np	27.3	37.7	44.3	66.8	np	41.0
November	37.3	29.5	31.8	np	20.4	29.5	34.5	57.9	np	32.4
December	27.8	18.9	29.5	np	15.9	21.4	24.8	49.2	np	24.1
December Quarter	37.4	28.8	33.5	np	21.2	29.5	34.5	58.0	np	32.5

np not available for publication but included in totals where applicable, unless otherwise indicated

(a) Star grade classifications have been revised. See Explanatory Notes.

Period	Licensed hotels with facilities	Motels and guest houses	Serviced apartments	STAR GRADING						Ungraded	Total
				1	2	3	4	5			
GUEST ARRIVALS ('000)											
<b>2003</b>											
December Quarter	88.8	124.6	49.9	3.3	20.1	91.2	117.1	np	np	263.3	
<b>2004</b>											
October	45.6	57.1	22.6	np	7.1	44.2	57.0	12.5	np	125.3	
November	36.0	45.6	19.0	np	4.9	35.9	44.9	11.1	np	100.6	
December	27.8	29.0	18.1	np	3.9	26.7	30.9	9.8	np	74.9	
December Quarter	109.5	131.7	59.7	np	15.8	106.8	132.9	33.4	np	300.8	
AVERAGE LENGTH OF STAY (days)											
<b>2003</b>											
December Quarter	1.8	1.7	2.5	2.5	1.9	1.8	1.9	np	np	1.9	
<b>2004</b>											
October	1.8	1.8	2.4	np	1.9	1.8	1.9	1.9	np	1.9	
November	1.8	1.7	2.2	np	2.0	1.7	1.8	1.8	np	1.8	
December	1.8	1.7	2.2	np	2.0	1.7	1.9	1.8	np	1.9	
December Quarter	1.8	1.7	2.3	np	1.9	1.8	1.9	1.8	np	1.9	
TAKINGS FROM ACCOMMODATION (\$'000)											
<b>2003</b>											
December Quarter	13 394	13 138	7 819	300	1 543	9 223	17 190	np	np	34 351	
<b>2004</b>											
October	6 579	6 517	3 852	np	586	4 720	8 029	2 901	np	16 948	
November	5 216	4 984	3 140	np	416	3 442	6 401	2 528	np	13 340	
December	3 780	3 045	2 380	np	293	2 328	4 261	1 931	np	9 204	
December Quarter	15 575	14 546	9 372	np	1 295	10 490	18 690	7 360	np	39 492	
AVERAGE TAKINGS PER ROOM NIGHT OCCUPIED (\$)											
<b>2003</b>											
December Quarter	126.5	105.3	127.1	69.6	63.8	103.0	121.9	np	np	117.5	
<b>2004</b>											
October	133.2	111.2	136.6	np	70.2	108.4	127.6	195.8	np	124.4	
November	127.7	110.5	134.6	np	63.9	104.1	125.5	195.9	np	122.1	
December	122.4	98.5	120.3	np	57.0	96.6	115.3	181.0	np	112.8	
December Quarter	128.6	108.0	131.4	np	64.8	104.2	123.9	191.7	np	120.7	
AVERAGE TAKINGS PER AVAILABLE ROOM NIGHT (\$)											
<b>2003</b>											
December Quarter	68.1	48.4	64.5	27.7	23.1	45.2	70.6	np	np	58.3	
<b>2004</b>											
October	99.4	72.1	84.9	np	31.2	66.5	98.4	163.6	np	83.9	
November	81.4	57.0	71.5	np	22.9	50.1	81.0	147.3	np	68.3	
December	57.1	33.7	52.5	np	15.6	32.8	52.2	108.9	np	45.6	
December Quarter	79.3	54.2	69.6	np	23.3	49.8	77.2	139.9	np	65.9	

np not available for publication but included in totals where applicable, unless otherwise indicated

(a) Star grade classifications have been revised. See Explanatory Notes.

Period	Licensed hotels with facilities	Motels and guest houses	Serviced apartments	STAR GRADING						Ungraded	Total
				1	2	3	4	5			
ESTABLISHMENTS, CAPACITY AND EMPLOYMENT (no.)											
<b>December Quarter 2003</b>											
Establishments	15	26	17	1	9	16	29	1	2	58	
Rooms	1 912	1 835	1 254	np	472	1 316	2 807	np	np	5 001	
Bed spaces	4 797	5 195	3 953	np	1 609	3 791	7 452	np	np	13 945	
Persons employed	1 557	708	421	np	109	536	1 437	np	np	2 686	
<b>December Quarter 2004</b>											
Establishments	15	24	17	—	4	18	31	1	2	56	
Rooms	1 929	1 703	1 247	—	np	1 465	2 898	np	np	4 879	
Bed spaces	4 619	4 866	4 003	—	np	4 379	7 706	np	np	13 488	
Persons employed	1 486	654	385	—	np	565	1 405	np	np	2 525	
ROOM NIGHTS OCCUPIED ('000)											
<b>2003</b>											
December Quarter	131.6	105.4	85.3	np	24.0	72.5	196.6	np	np	322.2	
<b>2004</b>											
October	46.1	35.7	29.4	—	np	29.9	70.5	np	np	111.3	
November	44.0	32.8	27.8	—	np	27.3	66.0	np	np	104.5	
December	35.0	23.4	23.0	—	np	19.3	53.2	np	np	81.4	
December Quarter	125.1	91.9	80.1	—	np	76.4	189.8	np	np	297.2	
ROOM OCCUPANCY RATE (%)											
<b>2003</b>											
December Quarter	74.8	63.0	73.9	np	57.5	59.9	76.1	np	np	70.3	
<b>2004</b>											
October	78.2	67.7	76.1	—	np	65.7	78.5	np	np	73.9	
November	77.0	64.2	74.2	—	np	62.2	76.0	np	np	71.8	
December	58.6	44.3	59.4	—	np	42.4	59.3	np	np	53.8	
December Quarter	71.1	58.7	69.9	—	np	56.7	71.2	np	np	66.4	
GUEST NIGHTS OCCUPIED ('000)											
<b>2003</b>											
December Quarter	193.2	193.6	157.0	np	53.5	135.9	309.2	np	np	543.8	
<b>2004</b>											
October	70.2	65.7	53.6	—	np	59.6	113.5	np	np	189.4	
November	58.8	57.1	46.0	—	np	52.3	93.6	np	np	161.9	
December	53.2	38.7	44.4	—	np	34.2	88.0	np	np	136.3	
December Quarter	182.2	161.5	144.0	—	np	146.1	295.0	np	np	487.7	
BED OCCUPANCY RATE (%)											
<b>2003</b>											
December Quarter	43.8	40.9	43.2	np	37.3	39.0	45.1	np	np	42.5	
<b>2004</b>											
October	49.8	43.5	43.2	—	np	43.9	47.5	np	np	45.6	
November	43.1	39.1	38.3	—	np	39.8	40.5	np	np	40.2	
December	37.2	25.6	35.8	—	np	25.2	36.8	np	np	32.6	
December Quarter	43.3	36.1	39.1	—	np	36.3	41.6	np	np	39.4	

— nil or rounded to zero (including null cells)

np not available for publication but included in totals where applicable, unless otherwise indicated

(a) Star grade classifications have been revised. See Explanatory Notes.

Period	Licensed hotels with facilities	Motels and guest houses	Serviced apartments	STAR GRADING						Ungraded	Total
				1	2	3	4	5			
GUEST ARRIVALS ('000)											
<b>2003</b>											
December Quarter	104.7	91.2	40.1	np	24.3	51.8	138.0	np	np	236.0	
<b>2004</b>											
October	36.3	30.3	16.2	—	np	21.3	53.4	np	np	82.8	
November	33.9	26.6	13.7	—	np	18.8	47.0	np	np	74.2	
December	29.9	19.0	12.9	—	np	12.8	40.9	np	np	61.8	
December Quarter	100.1	75.9	42.8	—	np	52.9	141.3	np	np	218.8	
AVERAGE LENGTH OF STAY (days)											
<b>2003</b>											
December Quarter	1.8	2.1	3.9	np	2.2	2.6	2.2	np	np	2.3	
<b>2004</b>											
October	1.9	2.2	3.3	—	np	2.8	2.1	np	np	2.3	
November	1.7	2.1	3.4	—	np	2.8	2.0	np	np	2.2	
December	1.8	2.0	3.4	—	np	2.7	2.2	np	np	2.2	
December Quarter	1.8	2.1	3.4	—	np	2.8	2.1	np	np	2.2	
TAKINGS FROM ACCOMMODATION (\$'000)											
<b>2003</b>											
December Quarter	17 556	9 050	11 425	np	1 820	6 182	25 381	np	np	38 031	
<b>2004</b>											
October	5 937	3 038	3 875	—	np	2 470	8 774	np	np	12 850	
November	5 781	2 702	3 659	—	np	2 095	8 363	np	np	12 142	
December	4 386	1 943	3 066	—	np	1 585	6 545	np	np	9 394	
December Quarter	16 104	7 682	10 600	—	np	6 150	23 683	np	np	34 387	
AVERAGE TAKINGS PER ROOM NIGHT OCCUPIED (\$)											
<b>2003</b>											
December Quarter	133.4	85.9	134.0	np	75.8	85.3	129.1	np	np	118.0	
<b>2004</b>											
October	128.7	85.0	131.8	—	np	82.7	124.4	np	np	115.5	
November	131.4	82.4	131.8	—	np	76.7	126.6	np	np	116.2	
December	125.2	83.2	133.4	—	np	82.3	122.9	np	np	115.4	
December Quarter	128.7	83.6	132.3	—	np	80.5	124.8	np	np	115.7	
AVERAGE TAKINGS PER AVAILABLE ROOM NIGHT (\$)											
<b>2003</b>											
December Quarter	99.8	54.1	99.0	np	43.6	51.1	98.3	np	np	83.0	
<b>2004</b>											
October	100.6	57.5	100.2	—	np	54.4	97.7	np	np	85.4	
November	101.2	52.9	97.8	—	np	47.7	96.2	np	np	83.4	
December	73.3	36.8	79.3	—	np	34.9	72.9	np	np	62.1	
December Quarter	91.5	49.0	92.4	—	np	45.6	88.8	np	np	76.9	

— nil or rounded to zero (including null cells)

(a) Star grade classifications have been revised. See Explanatory Notes.

np not available for publication but included in totals where applicable, unless otherwise indicated

<i>Period</i>	<i>South Coast</i>	<i>Illawarra</i>	<i>Sydney</i>	<i>Snowy Mountains</i>	<i>Capital Country</i>	<i>The Murray</i>	<i>Riverina</i>	<i>Explorer Country</i>
ESTABLISHMENTS, CAPACITY AND EMPLOYMENT (no.)								
<b>December Quarter 2004</b>								
Establishments	81	34	293	67	65	97	63	124
Rooms	2 002	1 269	30 858	2 604	2 128	2 827	1 861	3 537
Bed spaces	6 054	3 642	76 515	9 561	5 970	8 562	5 383	10 491
Persons employed	686	639	19 234	511	814	914	555	1 163
ROOM NIGHTS OCCUPIED ('000)								
<b>2004</b>								
October	32.9	22.9	734.7	12.6	36.7	50.6	35.8	67.9
November	30.3	23.8	767.9	11.8	33.4	45.3	30.2	55.3
December	29.5	20.5	687.9	11.0	28.2	41.2	25.8	49.1
<i>December Quarter</i>	<i>92.7</i>	<i>67.2</i>	<i>2 190.5</i>	<i>35.4</i>	<i>98.2</i>	<i>137.1</i>	<i>91.8</i>	<i>172.3</i>
ROOM OCCUPANCY RATE (%)								
<b>2004</b>								
October	53.1	58.2	76.8	21.2	55.7	57.7	63.4	61.9
November	50.5	62.6	82.9	18.2	52.3	53.4	55.4	52.1
December	47.5	52.1	72.0	16.8	42.7	47.0	44.8	44.8
<i>December Quarter</i>	<i>50.3</i>	<i>57.6</i>	<i>77.2</i>	<i>18.7</i>	<i>50.2</i>	<i>52.7</i>	<i>54.4</i>	<i>53.0</i>
GUEST NIGHTS OCCUPIED ('000)								
<b>2004</b>								
October	61.5	38.8	1 193.1	26.1	65.5	95.5	60.9	125.5
November	54.6	38.1	1 237.2	23.0	56.5	83.0	47.8	89.3
December	59.4	37.4	1 206.3	24.0	51.9	85.2	44.7	89.3
<i>December Quarter</i>	<i>175.5</i>	<i>114.3</i>	<i>3 636.6</i>	<i>73.0</i>	<i>174.0</i>	<i>263.7</i>	<i>153.4</i>	<i>304.0</i>
GUEST ARRIVALS ('000)								
<b>2004</b>								
October	33.3	21.7	486.4	13.7	42.1	56.2	41.7	80.0
November	31.1	21.0	503.8	13.0	36.0	48.2	33.9	60.7
December	33.2	18.3	484.2	12.6	34.3	47.8	32.1	64.7
<i>December Quarter</i>	<i>97.7</i>	<i>61.0</i>	<i>1 474.5</i>	<i>39.2</i>	<i>112.4</i>	<i>152.2</i>	<i>107.7</i>	<i>205.5</i>
TAKINGS FROM ACCOMMODATION (\$'000)								
<b>2004</b>								
October	3 029	2 662	112 599	1 204	3 774	4 323	3 260	6 384
November	2 663	2 649	121 092	1 059	3 350	3 906	2 716	4 758
December	3 071	2 505	111 883	1 113	2 643	3 532	2 364	4 250
<i>December Quarter</i>	<i>8 763</i>	<i>7 816</i>	<i>345 573</i>	<i>3 375</i>	<i>9 767</i>	<i>11 761</i>	<i>8 340</i>	<i>15 392</i>

<i>Period</i>	<i>Hunter</i>	<i>North Coast NSW</i>	<i>Northern Rivers Tropical NSW</i>	<i>New England North West</i>	<i>Outback NSW</i>	<i>Central Coast</i>	<i>Blue Mountains</i>
ESTABLISHMENTS, CAPACITY AND EMPLOYMENT (no.)							
<b>December Quarter 2004</b>							
Establishments	81	155	78	89	45	41	33
Rooms	3 346	5 246	2 270	2 571	1 177	1 591	1 337
Bed spaces	10 135	17 494	7 153	7 554	3 373	4 856	3 436
Persons employed	1 885	2 460	692	785	332	783	812
ROOM NIGHTS OCCUPIED ('000)							
<b>2004</b>							
October	62.1	95.4	45.1	41.5	20.6	26.1	23.9
November	58.8	84.9	40.4	37.7	17.1	24.1	20.1
December	52.2	91.9	39.8	33.2	13.9	25.3	17.0
<i>December Quarter</i>	173.1	272.2	125.3	112.4	51.6	75.6	61.0
ROOM OCCUPANCY RATE (%)							
<b>2004</b>							
October	59.9	58.6	64.2	52.0	56.5	52.8	57.6
November	58.6	54.0	59.3	48.9	48.5	50.6	50.2
December	50.4	56.5	56.6	41.7	38.1	51.4	40.9
<i>December Quarter</i>	56.2	56.4	60.0	47.5	47.7	51.6	49.6
GUEST NIGHTS OCCUPIED ('000)							
<b>2004</b>							
October	110.0	208.5	89.6	71.2	35.3	54.7	44.3
November	98.1	173.9	78.1	59.5	26.3	50.1	35.6
December	96.6	220.3	86.1	60.3	22.7	58.5	31.2
<i>December Quarter</i>	304.6	602.8	253.8	191.0	84.2	163.2	111.2
GUEST ARRIVALS ('000)							
<b>2004</b>							
October	60.2	109.3	46.6	49.2	20.5	24.9	24.8
November	55.4	93.9	42.3	40.2	14.6	24.4	21.9
December	51.6	110.7	43.8	43.3	13.8	24.4	18.7
<i>December Quarter</i>	167.1	313.9	132.7	132.7	48.9	73.6	65.4
TAKINGS FROM ACCOMMODATION (\$'000)							
<b>2004</b>							
October	7 836	10 232	4 515	3 353	1 491	3 346	3 277
November	7 231	9 160	4 081	2 919	1 176	3 110	2 596
December	6 542	11 449	4 558	2 696	1 008	3 712	2 309
<i>December Quarter</i>	21 610	30 840	13 154	8 968	3 675	10 169	8 183

<i>Period</i>	<i>Melbourne</i>	<i>Wimmera</i>	<i>Mallee</i>	<i>Western Western Grampians</i>	<i>Bendigo Loddon</i>	<i>Peninsula</i>	<i>Central Murray</i>	<i>Goulburn</i>	<i>High Country</i>	<i>Lakes</i>	
ESTABLISHMENTS, CAPACITY AND EMPLOYMENT (no.)											
<b>December Quarter 2004</b>											
Establishments	268	6	41	56	20	31	22	20	29	72	20
Rooms	21 661	115	1 279	1 490	490	809	752	550	798	1 973	552
Bed spaces	54 321	312	3 657	4 737	1 423	2 403	2 053	1 548	2 348	7 074	1 664
Persons employed	15 393	20	403	711	220	364	341	153	434	577	219
ROOM NIGHTS OCCUPIED ('000)											
<b>2004</b>											
October	487.1	1.4	24.7	26.8	10.0	16.5	9.8	10.0	13.7	16.9	9.3
November	505.1	1.1	19.0	26.8	8.3	14.9	9.7	8.8	12.4	15.7	8.5
December	427.3	1.1	17.6	26.0	7.1	11.7	11.7	7.1	10.3	13.7	8.6
<i>December Quarter</i>	<i>1 419.5</i>	<i>3.6</i>	<i>61.2</i>	<i>79.5</i>	<i>25.4</i>	<i>43.0</i>	<i>31.2</i>	<i>25.9</i>	<i>36.3</i>	<i>46.3</i>	<i>26.4</i>
ROOM OCCUPANCY RATE (%)											
<b>2004</b>											
October	72.4	40.6	62.2	58.0	65.9	65.6	42.2	58.8	55.2	32.3	54.1
November	77.7	30.6	49.5	59.9	56.7	61.3	42.8	53.3	51.8	30.8	51.6
December	63.6	29.8	44.3	56.3	46.5	46.5	50.2	41.7	41.6	25.9	50.3
<i>December Quarter</i>	<i>71.2</i>	<i>33.7</i>	<i>52.0</i>	<i>58.0</i>	<i>56.3</i>	<i>57.8</i>	<i>45.1</i>	<i>51.2</i>	<i>49.5</i>	<i>29.6</i>	<i>52.0</i>
GUEST NIGHTS OCCUPIED ('000)											
<b>2004</b>											
October	792.6	2.3	42.6	48.6	16.4	27.6	17.0	17.7	21.8	36.1	16.9
November	811.7	1.6	30.7	48.0	12.6	24.4	16.7	14.9	19.9	29.6	15.5
December	743.8	1.6	31.4	54.3	11.4	20.6	21.2	13.4	17.3	28.3	17.7
<i>December Quarter</i>	<i>2 348.1</i>	<i>5.5</i>	<i>104.8</i>	<i>151.0</i>	<i>40.4</i>	<i>72.6</i>	<i>54.8</i>	<i>46.1</i>	<i>59.0</i>	<i>94.0</i>	<i>50.1</i>
GUEST ARRIVALS ('000)											
<b>2004</b>											
October	331.6	1.6	26.1	32.8	11.1	16.6	9.3	12.1	13.9	21.6	10.6
November	338.2	1.3	19.5	32.8	9.1	14.7	9.2	10.6	12.3	17.2	9.2
December	310.6	1.2	20.0	35.1	8.5	12.0	9.4	10.3	10.7	16.2	10.7
<i>December Quarter</i>	<i>980.3</i>	<i>4.1</i>	<i>65.6</i>	<i>100.6</i>	<i>28.6</i>	<i>43.2</i>	<i>27.8</i>	<i>33.0</i>	<i>36.9</i>	<i>55.1</i>	<i>30.5</i>
TAKINGS FROM ACCOMMODATION (\$'000)											
<b>2004</b>											
October	68 813	92	2 043	2 769	843	1 625	1 175	826	1 197	1 693	731
November	72 685	67	1 612	2 837	725	1 459	1 187	725	1 162	1 498	714
December	58 485	68	1 526	3 102	588	1 153	1 395	608	900	1 374	833
<i>December Quarter</i>	<i>199 984</i>	<i>228</i>	<i>5 182</i>	<i>8 709</i>	<i>2 157</i>	<i>4 237</i>	<i>3 757</i>	<i>2 159</i>	<i>3 259</i>	<i>4 565</i>	<i>2 278</i>



<i>Period</i>	<i>Gippsland</i>	<i>Melbourne East</i>	<i>Geelong</i>	<i>Macedon</i>	<i>Spa Country</i>	<i>Ballarat</i>	<i>Central Highlands</i>	<i>Upper Yarra</i>	<i>Murray East</i>	<i>Phillip Island</i>
---------------	------------------	-----------------------	----------------	----------------	--------------------	-----------------	--------------------------	--------------------	--------------------	-----------------------

## ESTABLISHMENTS, CAPACITY AND EMPLOYMENT (no.)

## December Quarter 2004

Establishments	33	14	25	5	4	25	13	11	16	10
Rooms	1 003	490	839	123	97	817	311	395	465	344
Bed spaces	2 760	1 289	2 387	318	298	2 591	931	981	1 253	1 201
Persons employed	272	490	514	99	123	383	84	201	95	132

## ROOM NIGHTS OCCUPIED ('000)

## 2004

October	14.6	6.5	14.1	1.9	1.7	17.2	5.6	3.1	7.1	5.0
November	12.5	6.6	14.7	1.5	1.5	14.3	4.3	2.8	6.3	4.8
December	11.9	4.5	12.8	1.1	1.2	11.5	4.1	2.1	5.3	4.5
December Quarter	39.0	17.6	41.6	4.5	4.4	42.9	14.0	7.9	18.7	14.2

## ROOM OCCUPANCY RATE (%)

## 2004

October	46.8	42.9	54.1	49.6	56.3	67.7	58.1	25.1	49.6	46.5
November	41.7	44.9	58.5	41.8	52.2	58.4	46.3	23.7	44.8	46.3
December	38.2	29.5	49.3	28.1	40.9	45.3	42.2	18.1	36.6	42.0
December Quarter	42.3	39.0	53.9	39.8	49.8	57.1	48.9	22.4	43.7	44.9

## GUEST NIGHTS OCCUPIED ('000)

## 2004

October	23.6	10.1	23.9	2.3	2.7	37.3	9.8	4.8	11.8	11.3
November	18.3	10.1	24.0	1.9	2.5	27.2	7.2	4.2	9.9	12.0
December	19.7	7.8	24.4	1.4	2.2	22.6	6.9	3.5	9.1	12.4
December Quarter	61.6	28.0	72.3	5.6	7.4	87.1	23.9	12.6	30.8	35.7

## GUEST ARRIVALS ('000)

## 2004

October	14.7	6.1	14.0	1.3	1.6	22.3	5.8	3.3	6.9	5.5
November	12.1	5.7	13.5	1.2	1.6	15.8	4.5	3.2	5.4	6.6
December	11.9	4.9	14.6	0.9	1.5	14.0	3.8	2.4	5.9	6.6
December Quarter	38.6	16.7	42.1	3.4	4.8	52.1	14.1	8.9	18.2	18.7

## TAKINGS FROM ACCOMMODATION (\$'000)

## 2004

October	1 137	967	1 542	251	360	1 675	519	336	561	667
November	1 008	967	1 583	193	349	1 346	396	342	474	562
December	955	645	1 537	127	294	1 095	379	297	416	629
December Quarter	3 100	2 579	4 662	572	1 003	4 116	1 295	974	1 451	1 858

<i>Period</i>	<i>Gold Coast</i>	<i>Brisbane</i>	<i>Sunshine Coast</i>	<i>Hervey Bay/Maryborough</i>	<i>Darling Downs</i>	<i>Bundaberg</i>	<i>Fitzroy</i>
ESTABLISHMENTS, CAPACITY AND EMPLOYMENT ( <i>no.</i> )							
<b>December Quarter 2004</b>							
Establishments	152	160	103	50	65	29	88
Rooms	13 077	9 911	4 859	1 901	1 661	759	3 333
Bed spaces	41 885	28 494	16 866	6 023	5 104	2 492	10 140
Persons employed	8 921	6 517	2 313	860	596	283	1 712
ROOM NIGHTS OCCUPIED ('000)							
<b>2004</b>							
October	311.4	244.4	113.0	33.5	34.0	13.9	67.4
November	291.2	239.6	99.1	30.9	28.9	13.5	61.9
December	283.9	207.5	101.8	31.0	25.0	12.5	54.7
<i>December Quarter</i>	886.5	691.5	313.8	95.3	87.9	39.9	184.0
ROOM OCCUPANCY RATE (%)							
<b>2004</b>							
October	76.8	79.5	75.0	56.8	66.0	59.1	65.2
November	74.2	80.6	68.0	54.2	58.1	59.1	61.9
December	70.0	67.5	67.6	52.6	48.5	53.1	52.9
<i>December Quarter</i>	73.7	75.8	70.2	54.5	57.5	57.1	60.0
GUEST NIGHTS OCCUPIED ('000)							
<b>2004</b>							
October	731.7	395.5	293.5	68.7	57.2	23.8	108.7
November	675.0	371.5	248.2	56.8	48.0	22.9	98.6
December	716.7	362.1	296.1	64.5	46.4	25.2	102.1
<i>December Quarter</i>	2 123.4	1 129.1	837.8	189.9	151.6	71.9	309.4
GUEST ARRIVALS ('000)							
<b>2004</b>							
October	210.9	178.4	86.6	29.7	37.2	14.1	54.0
November	198.5	174.4	78.7	26.5	31.6	14.0	49.9
December	213.5	163.9	84.6	26.5	31.6	14.4	52.1
<i>December Quarter</i>	622.9	516.7	249.8	82.8	100.5	42.4	155.9
TAKINGS FROM ACCOMMODATION (\$'000)							
<b>2004</b>							
October	41 734	29 229	15 147	2 924	2 826	1 273	6 369
November	33 262	28 520	13 106	2 506	2 346	1 253	5 843
December	39 583	24 121	15 932	2 900	2 065	1 291	5 607
<i>December Quarter</i>	114 579	81 871	44 185	8 330	7 237	3 817	17 818

<i>Period</i>	<i>Mackay</i>	<i>Whitsundays</i>	<i>Northern</i>	<i>Tropical North Queensland</i>	<i>Outback</i>	<i>Great Barrier Reef(a)</i>
ESTABLISHMENTS, CAPACITY AND EMPLOYMENT (no.)						
<b>December Quarter 2004</b>						
Establishments	52	30	50	176	55	18
Rooms	1 716	2 709	2 321	11 734	1 492	2 760
Bed spaces	5 334	9 408	6 514	34 139	4 237	9 516
Persons employed	1 036	2 438	1 170	5 879	492	2 936
ROOM NIGHTS OCCUPIED ('000)						
<b>2004</b>						
October	37.4	59.5	47.0	256.8	23.8	61.9
November	34.5	51.4	46.2	225.4	22.7	50.9
December	31.8	49.3	39.0	191.0	17.3	52.1
<i>December Quarter</i>	103.7	160.2	132.2	673.3	63.8	164.9
ROOM OCCUPANCY RATE (%)						
<b>2004</b>						
October	70.4	70.9	65.3	70.6	51.8	72.3
November	67.0	63.2	66.4	64.0	50.7	61.5
December	59.7	58.7	54.2	52.5	37.4	60.8
<i>December Quarter</i>	65.7	64.3	61.9	62.4	46.6	64.9
GUEST NIGHTS OCCUPIED ('000)						
<b>2004</b>						
October	62.5	133.6	71.1	518.3	33.1	141.2
November	54.9	111.8	66.9	433.7	30.7	112.6
December	58.8	117.9	65.8	402.0	25.7	125.7
<i>December Quarter</i>	176.1	363.3	203.8	1 354.0	89.5	379.5
GUEST ARRIVALS ('000)						
<b>2004</b>						
October	28.8	41.8	35.2	162.5	20.7	36.4
November	26.8	36.7	33.4	140.2	18.4	31.1
December	27.6	37.9	31.2	134.2	16.9	32.8
<i>December Quarter</i>	83.2	116.4	99.8	436.9	55.9	100.3
TAKINGS FROM ACCOMMODATION (\$'000)						
<b>2004</b>						
October	3 894	11 286	4 476	34 743	1 916	14 703
November	3 489	9 375	4 336	28 910	1 823	11 904
December	3 358	11 251	3 819	25 463	1 410	14 046
<i>December Quarter</i>	10 740	31 912	12 631	89 116	5 149	40 653

(a) Includes those parts of other Tourism Regions which fall within the Great Barrier Reef geographic area. Data are not included in Queensland totals.

<i>Period</i>	<i>Limestone Coast</i>	<i>Murraylands</i>	<i>Fleurieu Peninsula</i>	<i>Adelaide</i>	<i>Adelaide Hills</i>	<i>Barossa</i>	<i>Riverland</i>
---------------	------------------------	--------------------	---------------------------	-----------------	-----------------------	----------------	------------------

ESTABLISHMENTS, CAPACITY AND EMPLOYMENT (no.)

**December Quarter 2004**

Establishments	33	4	12	96	4	9	14
Rooms	968	97	369	6 754	134	363	503
Bed spaces	2 719	303	1 109	18 342	389	1 000	1 531
Persons employed	415	51	296	3 874	119	321	566

ROOM NIGHTS OCCUPIED ('000)

**2004**

October	17.5	1.9	6.6	142.2	2.8	7.5	8.9
November	16.8	1.8	5.5	157.7	2.5	7.0	8.1
December	13.8	1.3	4.9	125.0	2.3	5.0	7.0
<i>December Quarter</i>	48.1	5.0	17.0	424.9	7.5	19.5	24.0

ROOM OCCUPANCY RATE (%)

**2004**

October	58.3	62.5	57.7	67.9	67.9	66.6	56.8
November	58.0	61.0	49.6	77.8	61.3	64.4	53.5
December	46.0	44.0	43.2	59.7	54.3	44.5	45.2
<i>December Quarter</i>	54.1	55.8	50.2	68.4	61.1	58.5	51.8

GUEST NIGHTS OCCUPIED ('000)

**2004**

October	28.1	3.3	15.2	230.2	5.4	13.5	15.0
November	25.9	2.9	10.9	251.2	4.8	11.7	12.7
December	23.7	2.5	11.8	217.0	4.8	9.8	13.0
<i>December Quarter</i>	77.7	8.7	37.9	698.4	15.1	35.0	40.7

GUEST ARRIVALS ('000)

**2004**

October	18.5	2.0	9.6	95.3	2.3	8.6	9.1
November	17.5	1.7	6.9	102.9	2.1	7.4	7.3
December	15.8	1.5	7.2	91.8	2.0	6.4	7.4
<i>December Quarter</i>	51.8	5.2	23.7	290.0	6.4	22.4	23.9

TAKINGS FROM ACCOMMODATION (\$'000)

**2004**

October	1 415	140	609	17 103	287	806	670
November	1 365	129	564	19 594	258	728	598
December	1 182	102	534	15 155	258	557	551
<i>December Quarter</i>	3 961	371	1 706	51 853	803	2 091	1 818

<i>Period</i>	<i>Clare Valley</i>	<i>Flinders Ranges</i>	<i>Outback SA(a)</i>	<i>Eyre Peninsula</i>	<i>Yorke Peninsula</i>	<i>Kangaroo Island</i>
---------------	---------------------	------------------------	----------------------	-----------------------	------------------------	------------------------

ESTABLISHMENTS, CAPACITY AND EMPLOYMENT (no.)

**December Quarter 2004**

Establishments	4	20	8	25	8	5
Rooms	128	725	362	785	149	150
Bed spaces	400	2 263	955	2 219	437	405
Persons employed	84	288	177	634	77	125

ROOM NIGHTS OCCUPIED ('000)

**2004**

October	2.7	14.0	5.4	12.7	1.9	3.5
November	2.4	10.3	4.2	11.6	1.7	3.4
December	1.8	8.1	3.2	10.8	1.8	3.1
<i>December Quarter</i>	6.9	32.4	12.8	35.0	5.3	10.0

ROOM OCCUPANCY RATE (%)

**2004**

October	67.3	62.1	47.7	52.2	41.1	74.3
November	62.2	47.4	38.8	49.1	37.1	76.0
December	46.1	36.3	28.6	44.2	38.5	67.5
<i>December Quarter</i>	58.5	48.6	38.4	48.5	38.9	72.6

GUEST NIGHTS OCCUPIED ('000)

**2004**

October	5.1	23.3	9.2	18.9	2.6	6.3
November	3.9	17.1	6.8	16.0	2.1	6.1
December	3.7	13.8	5.3	16.5	2.6	6.2
<i>December Quarter</i>	12.8	54.2	21.3	51.4	7.3	18.6

GUEST ARRIVALS ('000)

**2004**

October	3.4	15.7	5.1	12.4	1.5	3.3
November	2.8	11.4	3.3	9.9	1.3	2.9
December	2.3	9.6	2.9	11.1	1.6	2.9
<i>December Quarter</i>	8.5	36.8	11.2	33.4	4.4	9.2

TAKINGS FROM ACCOMMODATION (\$'000)

**2004**

October	276	1 150	488	981	134	361
November	242	845	380	890	116	347
December	188	628	288	841	124	338
<i>December Quarter</i>	707	2 624	1 157	2 712	374	1 045

(a) An establishment in this tourism region has been made out of scope. As a result data for this region have been significantly affected. Refer to paragraph 5 of the Explanatory Notes for details.

<i>Period</i>	<i>Australia's Coral Coast</i>	<i>Australia's North West</i>	<i>Australia's South West</i>	<i>Experience Perth</i>	<i>Australia's Golden Outback</i>
---------------	--	---------------------------------------	---------------------------------------	-----------------------------	---

ESTABLISHMENTS, CAPACITY AND EMPLOYMENT (no.)

**December Quarter 2004**

Establishments	34	49	86	120	55
Rooms	1 459	3 210	3 572	10 738	1 958
Bed spaces	4 409	7 610	10 835	29 321	5 135
Persons employed	544	1 103	1 614	5 907	754

ROOM NIGHTS OCCUPIED ('000)

**2004**

October	26.4	64.4	60.6	244.2	35.3
November	20.7	51.7	54.2	235.7	30.6
December	19.0	39.1	55.9	211.4	25.6
<i>December Quarter</i>	<i>66.1</i>	<i>155.2</i>	<i>170.6</i>	<i>691.3</i>	<i>91.4</i>

ROOM OCCUPANCY RATE (%)

**2004**

October	58.3	64.7	55.6	73.4	58.1
November	47.4	54.7	50.8	73.4	52.1
December	42.1	40.1	50.5	63.7	42.1
<i>December Quarter</i>	<i>49.3</i>	<i>53.2</i>	<i>52.3</i>	<i>70.1</i>	<i>50.7</i>

GUEST NIGHTS OCCUPIED ('000)

**2004**

October	46.5	100.1	128.8	429.9	54.0
November	32.5	75.0	108.8	400.7	42.4
December	34.6	61.1	125.4	398.0	39.6
<i>December Quarter</i>	<i>113.6</i>	<i>236.2</i>	<i>363.0</i>	<i>1 228.6</i>	<i>136.0</i>

GUEST ARRIVALS ('000)

**2004**

October	29.1	31.3	61.8	169.7	28.1
November	19.1	21.0	52.4	161.3	20.5
December	19.7	17.6	54.8	163.2	20.0
<i>December Quarter</i>	<i>67.8</i>	<i>69.9</i>	<i>169.1</i>	<i>494.1</i>	<i>68.6</i>

TAKINGS FROM ACCOMMODATION (\$'000)

**2004**

October	2 334	7 691	7 002	29 094	3 143
November	1 787	5 275	6 055	28 309	2 683
December	1 689	4 090	7 191	25 640	2 217
<i>December Quarter</i>	<i>5 810</i>	<i>17 055</i>	<i>20 248</i>	<i>83 043</i>	<i>8 044</i>

<i>Period</i>	<i>Greater Hobart</i>	<i>Southern</i>	<i>East Coast</i>	<i>Northern</i>	<i>Greater Launceston</i>	<i>North West</i>	<i>West Coast</i>
---------------	-----------------------	-----------------	-------------------	-----------------	---------------------------	-------------------	-------------------

ESTABLISHMENTS, CAPACITY AND EMPLOYMENT (no.)

**December Quarter 2004**

Establishments	46	6	13	4	33	32	10
Rooms	2 412	155	518	128	1 492	1 080	443
Bed spaces	6 382	479	1 773	469	4 683	3 284	1 241
Persons employed	1 855	82	340	59	1 207	623	233

ROOM NIGHTS OCCUPIED ('000)

**2004**

October	54.7	2.6	7.8	1.6	31.2	17.5	6.6
November	56.7	2.8	8.5	2.0	31.0	16.3	7.4
December	50.5	2.2	7.9	2.1	25.5	14.5	5.5
<i>December Quarter</i>	<i>162.0</i>	<i>7.5</i>	<i>24.2</i>	<i>5.6</i>	<i>87.7</i>	<i>48.3</i>	<i>19.5</i>

ROOM OCCUPANCY RATE (%)

**2004**

October	73.3	53.3	48.6	41.1	67.4	52.1	48.2
November	78.5	60.3	54.9	51.0	69.4	50.3	55.3
December	67.5	45.0	48.9	51.8	55.1	43.4	40.4
<i>December Quarter</i>	<i>73.0</i>	<i>52.8</i>	<i>50.8</i>	<i>48.0</i>	<i>63.9</i>	<i>48.6</i>	<i>47.9</i>

GUEST NIGHTS OCCUPIED ('000)

**2004**

October	96.6	5.5	15.7	4.0	56.7	29.8	12.7
November	97.3	5.5	16.8	4.7	53.2	26.0	13.3
December	96.3	4.8	17.1	5.2	48.5	26.2	11.0
<i>December Quarter</i>	<i>290.1</i>	<i>15.8</i>	<i>49.6</i>	<i>13.8</i>	<i>158.3</i>	<i>82.0</i>	<i>36.9</i>

GUEST ARRIVALS ('000)

**2004**

October	41.0	4.5	11.7	2.8	28.4	22.1	7.0
November	42.3	4.7	13.2	3.5	29.7	19.5	7.3
December	41.0	4.0	12.7	3.6	27.7	19.3	5.8
<i>December Quarter</i>	<i>124.3</i>	<i>13.3</i>	<i>37.6</i>	<i>9.9</i>	<i>85.7</i>	<i>60.9</i>	<i>20.1</i>

TAKINGS FROM ACCOMMODATION (\$'000)

**2004**

October	6 720	233	888	161	3 220	1 834	679
November	6 928	255	979	199	3 367	1 730	743
December	6 388	209	1 004	198	2 873	1 602	624
<i>December Quarter</i>	<i>20 036</i>	<i>697</i>	<i>2 871</i>	<i>558</i>	<i>9 461</i>	<i>5 166</i>	<i>2 046</i>

.....

<i>Period</i>	<i>Darwin</i>	<i>Kakadu</i>	<i>Arnhem</i>	<i>Katherine</i>	<i>Tablelands</i>	<i>Petermann</i>	<i>Alice Springs</i>	<i>Canberra</i>
---------------	---------------	---------------	---------------	------------------	-------------------	------------------	----------------------	-----------------

.....

ESTABLISHMENTS, CAPACITY AND EMPLOYMENT (no.)

**December Quarter 2004**

Establishments	36	5	3	10	7	7	22	56
Rooms	2 754	357	83	610	np	np	1 650	4 879
Bed spaces	7 638	1 180	280	1 605	np	np	5 203	13 488
Persons employed	1 233	178	34	144	np	np	789	2 525

.....

ROOM NIGHTS OCCUPIED ('000)

**2004**

October	60.5	6.6	1.5	8.7	np	np	36.9	111.3
November	49.6	4.8	np	6.9	np	np	28.0	104.5
December	40.3	3.2	np	5.3	np	np	18.8	81.4
<i>December Quarter</i>	<i>150.4</i>	<i>14.6</i>	<i>4.1</i>	<i>20.9</i>	<i>np</i>	<i>np</i>	<i>83.8</i>	<i>297.2</i>

.....

ROOM OCCUPANCY RATE (%)

**2004**

October	70.9	59.6	59.6	45.9	np	np	72.2	73.9
November	60.0	44.8	np	37.8	np	np	56.6	71.8
December	47.1	28.8	np	27.8	np	np	36.8	53.8
<i>December Quarter</i>	<i>59.3</i>	<i>44.4</i>	<i>53.5</i>	<i>37.2</i>	<i>np</i>	<i>np</i>	<i>55.2</i>	<i>66.4</i>

.....

GUEST NIGHTS OCCUPIED ('000)

**2004**

October	101.0	12.3	2.6	14.0	np	np	66.1	189.4
November	77.8	9.1	np	11.7	np	np	46.3	161.9
December	66.2	6.4	np	8.2	np	np	33.3	136.3
<i>December Quarter</i>	<i>245.0</i>	<i>27.8</i>	<i>7.0</i>	<i>33.9</i>	<i>np</i>	<i>np</i>	<i>145.7</i>	<i>487.7</i>

.....

GUEST ARRIVALS ('000)

**2004**

October	46.4	10.2	0.8	10.2	np	np	30.2	82.8
November	35.6	7.3	np	8.2	np	np	25.4	74.2
December	29.5	4.9	np	5.7	np	np	18.8	61.8
<i>December Quarter</i>	<i>111.5</i>	<i>22.3</i>	<i>2.0</i>	<i>24.1</i>	<i>np</i>	<i>np</i>	<i>74.5</i>	<i>218.8</i>

.....

TAKINGS FROM ACCOMMODATION (\$'000)

**2004**

October	6 431	875	293	686	np	np	3 545	12 850
November	5 188	490	np	588	np	np	2 463	12 142
December	4 027	283	np	398	np	np	1 487	9 394
<i>December Quarter</i>	<i>15 646</i>	<i>1 649</i>	<i>711</i>	<i>1 672</i>	<i>np</i>	<i>np</i>	<i>7 494</i>	<i>34 387</i>

.....

np not available for publication but included in totals where applicable, unless otherwise indicated

(a) The Tourism Regions of Daly and Macdonnell do not appear in this table as there are no establishments in-scope of the collection in these regions.



## EXPLANATORY NOTES

- INTRODUCTION**
- 1** This publication presents data from the quarterly Survey of Tourist Accommodation (STA). The STA is a mailout collection that completely enumerates all in-scope accommodation establishments within Australia.
- SCOPE**
- 2** On a quarterly basis the STA includes licensed hotels with facilities, motels, guest houses and serviced apartments with 15 or more rooms or units.
- 3** Short-term non-residential accommodation, which is in scope of the STA, is accommodation which is not leased, and which is provided to guests who would generally stay for periods of less than two months.
- 4** Some establishments also provide long-term residential accommodation. For licensed hotels with facilities, motels, guest houses and serviced apartments, the amount of such activity is considered to be insignificant and is included in the data presented in this publication.
- ESTABLISHMENT OUT OF SCOPE**
- 5** An accommodation establishment in the Outback South Australia Tourism Region was made out of scope for the December quarter 2004. As a result, data for this region have been significantly affected, in particular, occupancy rates, room rates and total number of rooms. This establishment will remain out of scope for future quarters.
- DEFINITIONS OF ACCOMMODATION ESTABLISHMENTS**
- 6** For 2004 the STA includes the following categories of establishments which provide predominantly short-term non-residential accommodation to the general public:
- licensed hotels and resorts with facilities – establishments with 15 or more rooms which are licensed to operate a public bar and which provide accommodation on a room/suite basis, with a bath/shower and toilet in most guest rooms, but which do not have full cooking facilities (i.e. hot plates and oven/microwave) in most guest rooms
  - motels, private hotels and guest houses with facilities – establishments with 15 or more rooms which are not licensed to operate a public bar, and which provide accommodation on a room/suite basis, with a bath/shower and toilet in most guest rooms, but which do not have full cooking facilities (i.e. hot plates and oven/microwave) in most guest rooms
  - serviced apartments – establishments with 15 or more units which mostly comprise self-contained units at the same location, and which are available on a unit/apartment basis to the general public for a minimum of one night. The units should have full cooking facilities (i.e. hot plates and oven/microwave), refrigerator and bath/shower and toilet facilities; all bed linen and towels should be provided, and daily servicing (i.e. cleaning and bed making) must be available through the on-site management, although this service may not necessarily be used.
- COVERAGE**
- 7** The main source of coverage is from the Australian Automobile Association through AAA Tourism Pty Ltd. This is supplemented by notification of new tourism developments and their likely opening dates in selected guides, major tourism journals and periodicals and newspapers. Periodic comparison with lists of accommodation establishments provided by the various tourism commissions and industry associations is also undertaken.
- STAR GRADING**
- 8** Star grade classifications of establishments were revised by AAA Tourism Pty Ltd. These changes were implemented for the STA in the March quarter 2004 and should be taken into account when making comparisons with previous quarters.
- DATA QUALITY**
- 9** The survey does not have a sample component and the data are not subject to sampling variability. However, other inaccuracies collectively referred to as non-sampling error may affect the data. These non-sampling errors may arise from a number of sources, including:
- errors in the reporting of data by providers

## EXPLANATORY NOTES *continued*

### DATA QUALITY *continued*

- errors in the process of capturing data
- estimation for missing data
- definition and classification errors
- incomplete coverage.

**10** Every effort has been made to reduce non-sampling error to a minimum by careful design and testing of questionnaires, and efficient operating procedures and systems used to compile statistics.

### RESPONSE RATES

- 11** The December quarter 2004 response rates were:
- 92.9% licensed hotels with facilities
  - 92.2% motels and guest houses
  - 91.3% serviced apartments.

### IMPUTATION RATES

**12** Imputation is the process whereby a value is generated for missing data items by averaging the responses for similar establishments which were operating during the reference period.

- 13** The December quarter 2004 imputation rates were:
- 6.1% of room nights
  - 5.1% of takings.

### BREAK IN TIME SERIES

**14** In the June quarter 2003 the ABS identified 132 licensed hotels with facilities, motels and guest houses and serviced apartments which had been operating for a number of quarters but were not on the STA frame. These additional establishments were included in the STA from the June quarter 2003.

**15** The addition of the 132 tourism establishments resulted in a break in time series between the March and June quarters 2003. The impact of the break in time series is explained in Appendix 1, *Tourist Accommodation, Australia* (cat. no. 8635.0), December quarter 2003. Particular care needs to be taken for all calculations of percentage changes that cross the break in series.

### TAKINGS FROM ACCOMMODATION

**16** From 1 July 2000, takings from accommodation include gross revenue from the provision of accommodation, including GST. Takings from meals are excluded. Where businesses are unable to provide the data inclusive of GST, it is automatically adjusted by the ABS prior to aggregation and release in output.

### STATISTICAL GEOGRAPHY

**17** Small area statistics for 2004 are classified to the *Australian Standard Geographical Classification (ASGC), 2003 Edition* (cat. no. 1216.0). Data are coded to the statistical local area (SLA) level.

**18** These SLA data are aggregated to tourism regions as defined by relevant state and territory tourist commissions. Tourism regions are reviewed annually and are subject to boundary and name changes. Where changes have occurred care should be taken when making comparisons with previously published data at this level. This publication no longer presents comparative tourism region data for the same quarter of the previous year.

**19** Details of SLAs, the composition of tourism regions, major changes to tourism regions and outline maps of tourism regions are provided on the Tourism Theme Page of the ABS web site <[www.abs.gov.au](http://www.abs.gov.au)>.

### SEASONAL ADJUSTMENT

**20** Seasonal adjustment is a means of removing the estimated effects of normal seasonal variation from the original time series so that the effect of other influences on the series may be more clearly recognised. Seasonal adjustment procedures do not aim to remove the irregular or non-seasonal influences which may be present in any particular quarter. Irregular influences that are highly volatile can make it difficult to

## EXPLANATORY NOTES *continued*

### SEASONAL ADJUSTMENT

*continued*

interpret the movement of the series even after adjustment for seasonal variation, and cannot be assumed to indicate changes in the trend.

**21** The way in which seasonally adjusted and trend estimates were calculated changed from a Forward Factor methodology to a Concurrent methodology in March quarter 2003. The Forward Factor method relied on an annual analysis of the original time series to estimate seasonal factors that were to be applied in the forthcoming four quarters. Under this method the projected seasonal factors, or forward factors, were not updated until the next annual analysis. The Concurrent methodology uses the most up to date original time series available at each reference period to estimate seasonal factors thus eliminating the need to use projected seasonal factors.

### TREND ESTIMATES

**22** Smoothing the seasonally adjusted series reduces the impact of the irregular component of the seasonally adjusted series and creates the trend estimates. The trend estimates are derived by applying a 7-term Henderson moving average to the quarterly seasonally adjusted series. The Henderson moving average used in the middle of the time series is symmetric but, as the end of a time series is approached, asymmetric forms of the symmetric moving average are applied. Unlike the weights of the standard 7-term Henderson moving average, the weights used with the quarterly data have been tailored to suit the particular characteristics of individual series.

**23** While these techniques enable trend estimates for the latest period to be produced, the process does result in revisions to the trend estimates in recent quarters, particularly as additional original estimates become available. For further information refer to *Information Paper: A Guide to Interpreting Time Series - Monitoring Trends, 2003* (cat. no. 1349.0) available at the ABS web site <[www.abs.gov.au](http://www.abs.gov.au)>.

### EFFECTS OF ROUNDING

**24** Where figures have been rounded, discrepancies may occur between totals and the sum of the component items.

### RELATED PUBLICATIONS

**25** Other ABS publications and products which may be of interest are outlined below. Please note, older publications may no longer be available through ABS bookshops but are available through ABS libraries. All publications released from 1998 onwards are available on the ABS web site <[www.abs.gov.au](http://www.abs.gov.au)> (charges apply).

*Tourist Accommodation, Small Area Data* cat. no. 8635.1.55.001–8635.8.55.001  
(data cubes for each state/territory – issued quarterly)

*Tourist Accommodation, Australia, Expanded Scope Collection* cat. no.  
8635.0.55.001 (irregular)

*Short-term Visitor Arrivals Estimates, Australia* cat. no. 3401.0.55.001 (issued  
monthly)

*Overseas Arrivals and Departures, Australia* cat. no. 3401.0 (issued monthly)

*Australian National Accounts, Tourism Satellite Account* cat. no. 5249.0 (annual)

*Directory of Tourism Statistics, 2001* cat. no. 1130.0 (irregular)

**26** Current publications and other products released by the ABS are listed in the *Catalogue of Publications and Products* (cat. no. 1101.0). The catalogue is available from any ABS office or the ABS web site <[www.abs.gov.au](http://www.abs.gov.au)>. The ABS also issues a daily Release Advice on the web site which details products to be released in the week ahead.

### ABS DATA AVAILABLE ON REQUEST

**27** As well as the statistics included in this publication, the ABS has other relevant data available on request. Inquiries should be made to the National Information and Referral Service on 1300 135 070.

## EXPLANATORY NOTES *continued*

---

### ABBREVIATIONS

'000	thousand
\$'000	thousand dollars
AAA	Australian Automobile Association
ABS	Australian Bureau of Statistics
ACT	Australian Capital Territory
ASGC	Australian Standard Geographical Classification
cat. no.	Catalogue number
GST	Goods and Services Tax
no.	number
NSW	New South Wales
NT	Northern Territory
Qld	Queensland
SA	South Australia
SLA	statistical local area
STA	Survey of Tourist Accommodation
Tas.	Tasmania
Vic.	Victoria
WA	Western Australia

## GLOSSARY

<b>Average length of stay</b>	Average number of days each guest stayed during the reference period. It is a derived item calculated by dividing the number of guest nights by the number of guest arrivals with the result expressed as a number of days.
<b>Average takings per available room night</b>	The takings from accommodation divided by the total number of room nights for the survey period, $\text{Average takings per available room night}(\$) = \frac{\text{Takings from accommodation}}{\text{Room nights available}}$
<b>Average takings per room night occupied</b>	The takings from accommodation divided by the total number of room nights occupied for the survey period, $\text{Average takings per room night occupied}(\$) = \frac{\text{Takings from accommodation}}{\text{Room nights occupied}}$
<b>Bed occupancy rate</b>	The bed occupancy rate represents bed occupancy expressed as a percentage of total capacity available during the survey period, $\text{Bed occupancy rate} (\%) = \frac{\text{Guest nights occupied}}{\text{Guest nights available}} * 100$
<b>Bed spaces</b>	The maximum number of bed spaces normally in place available to accommodate paying guests during the survey period. Three-quarter beds are counted as one bed space; double beds as two bed spaces. Cots and divans not normally used as beds are excluded.
<b>Capacity</b>	Capacity in terms of guest rooms/units is the maximum number available to accommodate paying guests during the survey period. Capacity closed temporarily for seasonal reasons is included.
<b>Establishments</b>	The number of hotels, motels and guest houses and serviced apartments within the scope of the survey which operated for any part of the survey period, or which closed temporarily for the quarter for seasonal reasons.
<b>Guest arrivals</b>	The total number of paying guests counted only on the first night they stayed at the accommodation establishment during the survey period.
<b>Guest nights available</b>	The total number of nights available to all paying guests during the survey period.  This is derived from the number of bed spaces multiplied by the number of days for which they were available during the survey period. For establishments closing (other than for seasonal reasons) or opening during this period, operating periods only are included.
<b>Guest nights occupied</b>	The total number of paying guests counted on each night they stayed at the accommodation establishment during the survey period.
<b>Occupancy</b>	Occupancy in terms of room nights occupied refers to the total number of nights each guest room was occupied during the survey period.  Occupancy in terms of guest nights refers to the total number of paying guests counted on each night they stayed at the accommodation establishment during the survey period.
<b>Persons employed</b>	The total number of persons working at each accommodation establishment at the end of the survey period (including working proprietors and those working on other than accommodation activities).
<b>Room nights available</b>	The number of guest rooms/units available multiplied by the number of days for which they were available during the survey period. For establishments closing (other than for seasonal reasons) or opening during this period, operating periods only are included.
<b>Room nights occupied</b>	The number of nights each guest room/unit was occupied by a paying guest during the survey period.
<b>Room occupancy rate</b>	The room occupancy rate represents room occupancy expressed as a percentage of total capacity available during the survey period, $\text{Room occupancy rate} (\%) = \frac{\text{Room nights occupied}}{\text{Room nights available}} * 100$

## GLOSSARY *continued*

<b>Room occupancy rate</b> <i>continued</i>	providing that, for establishments closing (other than for seasonal reasons) or opening during the survey period, the denominator of the above expression includes only operating periods.
<b>Rooms</b>	The maximum number of rooms available for accommodating short-term paying guests at each hotel, motel and guest house and serviced apartment during the survey period. Units, apartments and suites are treated as rooms for these types of establishments in these survey results.
<b>Star grading</b>	<p>The grading of hotels, motels and guest houses with facilities and serviced apartments is based on the classification system owned by AAA Tourism Pty Ltd. The gradings are allocated according to a points system based on the amenities and facilities available to guests. Details of the grading scheme are contained in the publication <i>Accommodation Guide</i> published by AAA Tourism Pty Ltd for each of the individual Australian Motoring Organisations. For the purpose of classifying establishments to a star grading in this publication, 'half' star gradings are ignored (e.g. a two and a half star grading has been shown as two star).</p> <p>While coverage has significantly improved, some establishments (including some competing in the 4 and 5 star markets and having significant takings) still remain outside the star grading scheme. These establishments have been given a star grading of 'ungraded'.</p>
<b>Takings from accommodation</b>	<p>Since 1 July 2000, takings from accommodation include gross revenue from the provision of accommodation, including GST. Takings from meals are excluded. In cases where takings from accommodation data cannot be provided inclusive of GST the amount of GST payable is estimated and the data revised accordingly.</p> <p>Takings from accommodation for each month generally represent the takings received during that month. Where payments are received in advance of, or after the provision of accommodation to guests, the monthly figure for takings from accommodation may not necessarily bear a direct relationship to the number of guests accommodated during the month.</p>



## FOR MORE INFORMATION . . .

- INTERNET* **www.abs.gov.au** the ABS web site is the best place to start for access to summary data from our latest publications, information about the ABS, advice about upcoming releases, our catalogue, and Australia Now—a statistical profile.
- LIBRARY* A range of ABS publications is available from public and tertiary libraries Australia-wide. Contact your nearest library to determine whether it has the ABS statistics you require, or visit our web site for a list of libraries.
- CPI INFOLINE* For current and historical Consumer Price Index data, call 1902 981 074 (call cost 77c per minute).
- DIAL-A-STATISTIC* This service now provides only current Consumer Price Index statistics call 1900 986 400 (call cost 77c per minute).

## INFORMATION SERVICE

Data already published that can be provided within five minutes will be free of charge. Our information consultants can also help you to access the full range of ABS information—ABS user pays services can be tailored to your needs, time frame and budget. Publications may be purchased. Specialists are on hand to help you with analytical or methodological advice.

- PHONE* 1300 135 070
- EMAIL* [client.services@abs.gov.au](mailto:client.services@abs.gov.au)
- FAX* 1300 135 211
- POST* Client Services, ABS, GPO Box 796, Sydney NSW 2001

## WHY NOT SUBSCRIBE?

ABS subscription services provide regular, convenient and prompt deliveries of selected ABS publications and products as they are released. Email delivery of monthly and quarterly publications is available.

- PHONE* 1300 366 323
- EMAIL* [subscriptions@abs.gov.au](mailto:subscriptions@abs.gov.au)
- FAX* (03) 9615 7848
- POST* Subscription Services, ABS, GPO Box 2796Y, Melbourne Vic 3001



2863500012045

ISSN 1031 0770

RRP \$23.00